

Recombinant

DGRmAb®

IGF-I receptor beta (DGR12231) Rabbit mAb

db16672

Package : 10µL 20µL 50µL 100µL

Product Name : IGF-I receptor beta (DGR12231) Rabbit mAb**Cat.No.:** db16672**Synonyms** : IGFR; CD221; IGFI; JTK13; IGF1R**Application** : WB, ICC/IF, FC, IP**Reactivity** : Human, Mouse, Rat**Host species** : Rabbit**Background**

This receptor binds insulin-like growth factor with a high affinity. It has tyrosine kinase activity. The insulin-like growth factor I receptor plays a critical role in transformation events. Cleavage of the precursor generates alpha and beta subunits. It is highly overexpressed in most malignant tissues where it functions as an anti-apoptotic agent by enhancing cell survival. Alternatively spliced transcript variants encoding distinct isoforms have been found for this gene. [provided by RefSeq, May 2014]

Immunogen

Recombinant protein of human IGF-I receptor beta

Gene ID

3480

Swiss Prot

P08069

Synonyms

IGFR; CD221; IGFI; JTK13; IGF1R

Reactivity

Human, Mouse, Rat

Application

WB, ICC/IF, FC, IP

Recommended dilutionWB: 1:1000
ICC/IF: 1:200-1:1000
FC: 1:50-1:100
IP: 1:20-1:50**Observed MW**

95 kDa

Host species

Rabbit

Clonality

Monoclonal

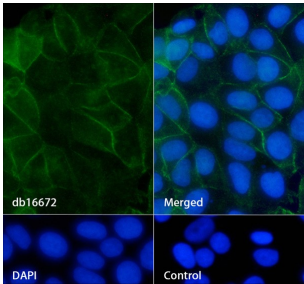
Clonality No.

DGR12231

Isotype

IgG

Purity	Affinity Purification
Conjugation	Un-conjugated
Storage Stability	Store at -20°C. Supplied in 50mM Tris-Glycine(pH 7.4), 0.15M NaCl, 40% Glycerol, 0.01% sodium azide and 0.05% BSA. Stable for 12 months from date of receipt.



Immunofluorescence analysis of MCF-7 cells labelling IGF-I receptor beta with db16672.

The cells were fixed with 4% PFA (10min, RT) followed by treatment with 0.1% Triton X-100 (10min, RT), and blocked in 1% BSA/10% normal goat serum/0.3M glycine in 0.1% PBS-Tween 20 for 1h. The cells were then incubate with db16672 (1:200) at room temprature for 1h, followed by a further incubation at room temperature for 45min with Goat Anti Rabbit IgG (H+L)-AF488 (db10005, shown in green). Nuclear DNA was labeled in blue with DAPI.

Control: Secondary antibody only.