

Recombinant

DGRmAb®

CDC5L (DGR36063) Rabbit mAb

db16298

Package : 10µL 20µL 50µL 100µL

Product Name : CDC5L (DGR36063) Rabbit mAb**Cat.No.:** db16298**Synonyms :** CDC5; CEF1; PCDC5RP; CDC5-LIKE; dJ319D22.1**Application :** WB, IHC-P, ICC/IF**Reactivity :** Human, Mouse, Rat**Host species :** Rabbit**Background**

The protein encoded by this gene shares a significant similarity with *Schizosaccharomyces pombe* cdc5 gene product, which is a cell cycle regulator important for G2/M transition. This protein has been demonstrated to act as a positive regulator of cell cycle G2/M progression. It was also found to be an essential component of a non-snRNA spliceosome, which contains at least five additional protein factors and is required for the second catalytic step of pre-mRNA splicing. [provided by RefSeq, Jul 2008]

Immunogen

A synthetic peptide of human CDC5L

Gene ID

988

Swiss Prot

Q99459

Synonyms

CDC5; CEF1; PCDC5RP; CDC5-LIKE; dJ319D22.1

Reactivity

Human, Mouse, Rat

Application

WB, IHC-P, ICC/IF

Recommended dilution

WB: 1:1000-1:5000

IHC-P: 1:200-1:500

ICC/IF: 1:200-1:500

Calculated MW

92 kDa

Observed MW

92 kDa

Host species

Rabbit

Clonality

Monoclonal

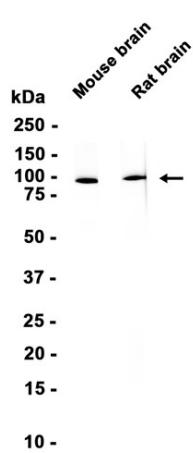
Clonality No.

DGR36063

Isotype

IgG

Purity	Affinity Purification
Conjugation	Un-conjugated
Storage Stability	Store at -20°C. Supplied in 50mM Tris-Glycine(pH 7.4), 0.15M NaCl, 40% Glycerol, 0.01% sodium azide and 0.05% BSA. Stable for 12 months from date of receipt.



Western blot analysis of extracts from Mouse brain, Rat brain tissues using db16298 at 1:1000.