

Recombinant

DGRmAb®

Cystatin-A (DGR36080) Rabbit mAb

db16315

Package : 10µL 20µL 50µL 100µL

Product Name : Cystatin-A (DGR36080) Rabbit mAb**Cat.No.:** db16315**Synonyms** : AREI; PSS4; STF1; STFA**Application** : WB, FC**Reactivity** : Human, Mouse, Rat**Host species** : Rabbit**Background**

The cystatin superfamily encompasses proteins that contain multiple cystatin-like sequences. Some of the members are active cysteine protease inhibitors, while others have lost or perhaps never acquired this inhibitory activity. There are three inhibitory families in the superfamily, including the type 1 cystatins (stefins), type 2 cystatins, and kininogens. This gene encodes a stefin that functions as a cysteine protease inhibitor, forming tight complexes with papain and the cathepsins B, H, and L. The protein is one of the precursor proteins of cornified cell envelope in keratinocytes and plays a role in epidermal development and maintenance. Stefins have been proposed as prognostic and diagnostic tools for cancer. [provided by RefSeq, Jul 2008]

Immunogen

A synthetic peptide of human Cystatin-A

Gene ID

1475

Swiss Prot

P01040

Synonyms

AREI; PSS4; STF1; STFA

Reactivity

Human, Mouse, Rat

Application

WB, FC

Recommended dilution

WB: 1:1000-1:5000

FC: 1:20-1:100

Calculated MW

11 kDa

Observed MW

14 kDa

Host species

Rabbit

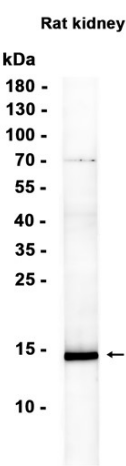
Clonality

Monoclonal

Clonality No.

DGR36080

Isotype	IgG
Purity	Affinity Purification
Conjugation	Un-conjugated
Storage Stability	Store at -20°C. Supplied in 50mM Tris-Glycine(pH 7.4), 0.15M NaCl, 40% Glycerol, 0.01% sodium azide and 0.05% BSA. Stable for 12 months from date of receipt.



Western blot analysis of extracts from Rat kidney tissue using db16315 at 1:1000.