

Recombinant

DGRmAb®

**S100B (DGR14866) Rabbit mAb (PBS Only)**

db11749-PBS

Package : 100µg

**Product Name :** S100B (DGR14866) Rabbit mAb (PBS Only)**Cat.No.:** db11749-PBS**Synonyms :** NEF; S100; S100-B; S100beta**Application :** WB, IHC-P, ICC/IF**Reactivity :** Human,Mouse,Rat**Host species :** Rabbit**Background**

The protein encoded by this gene is a member of the S100 family of proteins containing 2 EF-hand calcium-binding motifs. S100 proteins are localized in the cytoplasm and/or nucleus of a wide range of cells, and involved in the regulation of a number of cellular processes such as cell cycle progression and differentiation. S100 genes include at least 13 members which are located as a cluster on chromosome 1q21; however, this gene is located at 21q22.3. This protein may function in Neurite extension, proliferation of melanoma cells, stimulation of Ca<sup>2+</sup> fluxes, inhibition of PKC-mediated phosphorylation, astrocytosis and axonal proliferation, and inhibition of microtubule assembly. Chromosomal rearrangements and altered expression of this gene have been implicated in several neurological, neoplastic, and other types of diseases, including Alzheimer's disease, Down's syndrome, epilepsy, amyotrophic lateral sclerosis, melanoma, and type I diabetes. [provided by RefSeq, Jul 2008]

**Immunogen**

A synthetic peptide of human S100B

**Gene ID**

6285

**Swiss Prot**

P04271

**Synonyms**

NEF; S100; S100-B; S100beta

**Reactivity**

Human,Mouse,Rat

**Application**

WB, IHC-P, ICC/IF

**Calculated MW**

11 kDa

**Observed MW**

11 kDa

**Host species**

Rabbit

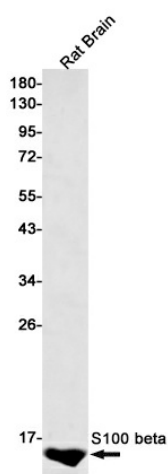
**Clonality**

Monoclonal

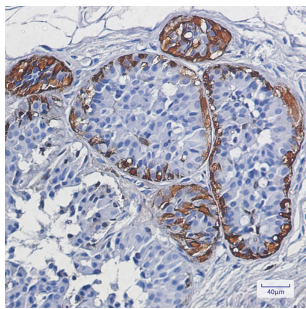
**Clonality No.**

DGR14866

Isotype	IgG
Purity	Affinity Purification
Conjugation	Un-conjugated
Concentration	1 mg/mL
Formulation	PBS Only
Storage Stability	Store at -20°C. Recommended to aliquot into single-use vials. Supplied in 1X PBS (pH 7.4). BSA and Azide Free. Stable for 12 months from date of receipt.



Western blot detection of S100 beta in Rat Brain lysates using S100 beta antibody(1:500 diluted).



Immunohistochemical analysis of paraffin-embedded human breast cancer using [db11749](#) antibody.