

Recombinant

DGRmAb®

JNK1/JNK2/JNK3 (DGR13729) Rabbit mAb (PBS Only)

db14225-PBS

Package : 100µg

Product Name : JNK1/JNK2/JNK3 (DGR13729) Rabbit mAb (PBS Only)**Cat.No.:** db14225-PBS**Synonyms :** JNK; JNK1; PRKM8; SAPK1; JNK-46; JNK1A2; SAPK1c; JNK21B1/2**Application :** WB, ICC/IF, FC, IP**Reactivity :** Human,Mouse,Rat**Host species :** Rabbit**Background**

The protein encoded by this gene is a member of the MAP kinase family. MAP kinases act as an integration point for multiple biochemical signals, and are involved in a wide variety of cellular processes such as proliferation, differentiation, transcription regulation and development. This kinase is activated by various cell stimuli, and targets specific transcription factors, and thus mediates immediate-early gene expression in response to cell stimuli. The activation of this kinase by tumor-necrosis factor alpha (TNF-alpha) is found to be required for TNF-alpha induced apoptosis. This kinase is also involved in UV radiation induced apoptosis, which is thought to be related to cytochrom c-mediated cell death pathway. Studies of the mouse counterpart of this gene suggested that this kinase play a key role in T cell proliferation, apoptosis and differentiation. Several alternatively spliced transcript variants encoding distinct isoforms have been reported. [provided by RefSeq, Apr 2016]

Immunogen

Recombinant protein of human JNK1

Gene ID

5599

Swiss Prot

P45983

Synonyms

JNK; JNK1; PRKM8; SAPK1; JNK-46; JNK1A2; SAPK1c; JNK21B1/2

Reactivity

Human,Mouse,Rat

Application

WB, ICC/IF, FC, IP

Calculated MW

48,53 kDa

Observed MW

46,54 kDa

Host species

Rabbit

Clonality

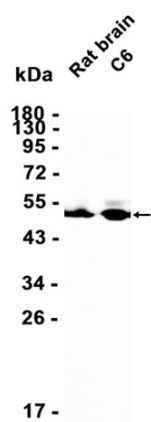
Monoclonal

Clonality No.

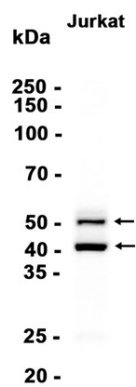
DGR13729

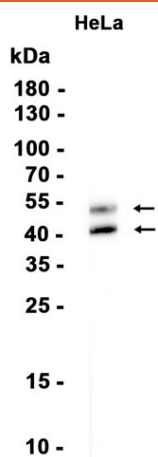
Isotype	IgG
Purity	Affinity Purification
Conjugation	Un-conjugated
Concentration	1 mg/mL
Formulation	PBS Only
Storage Stability	Store at -20°C. Recommended to aliquot into single-use vials. Supplied in 1X PBS (pH 7.4). BSA and Azide Free. Stable for 12 months from date of receipt.

Western blot analysis of extracts from C6 cells and Rat brain tissue using [db14225](#) at 1:1000.

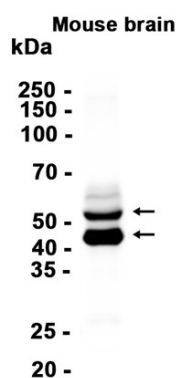


Western blot analysis of extracts from Jurkat cells using [db14225](#) at 1:1000.

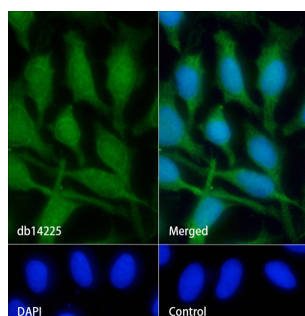




Western blot analysis of extracts from HeLa cells using [db14225](#) at 1:1000.



Western blot analysis of extracts from Mouse brain tissue using [db14225](#) at 1:1000.



Immunofluorescence analysis of HeLa cells labelling JNK1/JNK2/JNK3 with [db14225](#).

The cells were fixed with cold 100% methanol (10min, 4°C) and blocked in 1% BSA/10% normal goat serum/0.3M glycine in 0.1% PBS-Tween 20 for 1h. The cells were then incubate with [db14225](#) (1:500) at room temprature for 1h, followed by a further incubation at room temperature for 45min with Goat Anti Rabbit IgG (H+L)-AF488 ([db10005](#), shown in green).

Nuclear DNA was labeled in blue with DAPI.

Control: Secondary antibody only.