

Recombinant

DGRmAb®

AKT1/2/3 (DGR16839) Rabbit mAb (PBS Only)

db11977-PBS

Package : 100µg

Product Name : AKT1/2/3 (DGR16839) Rabbit mAb (PBS Only)**Cat.No.:** db11977-PBS**Synonyms :** MPPH; PKBG; MPPH2; PRKBG; STK-2; PKB-GAMMA; RAC-gamma; RAC-PK-gamma**Application :** WB, IHC-P, ICC/IF, FC, IP**Reactivity :** Human,Mouse,Rat**Host species :** Rabbit**Background**

The protein encoded by this gene is a member of the AKT, also called PKB, serine/threonine protein kinase family. AKT kinases are known to be regulators of cell signaling in response to insulin and growth factors. They are involved in a wide variety of biological processes including cell proliferation, differentiation, apoptosis, tumorigenesis, as well as glycogen synthesis and glucose uptake. This kinase has been shown to be stimulated by platelet-derived growth factor (PDGF), insulin, and insulin-like growth factor 1 (IGF1). Alternatively splice transcript variants encoding distinct isoforms have been described. [provided by RefSeq, Jul 2008]

Immunogen

Recombinant protein of human AKT1/2/3

Gene ID

10000

Swiss Prot

P31749

Synonyms

MPPH; PKBG; MPPH2; PRKBG; STK-2; PKB-GAMMA; RAC-gamma; RAC-PK-gamma

Reactivity

Human,Mouse,Rat

Application

WB, IHC-P, ICC/IF, FC, IP

Calculated MW

56 kDa

Observed MW

56 kDa

Host species

Rabbit

Clonality

Monoclonal

Clonality No.

DGR16839

Isotype

IgG

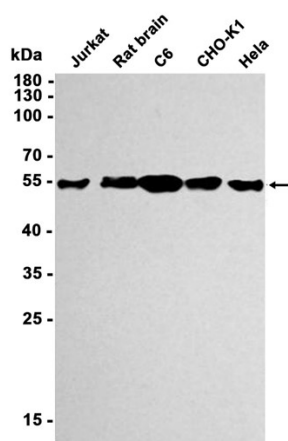
Purity

Affinity Purification

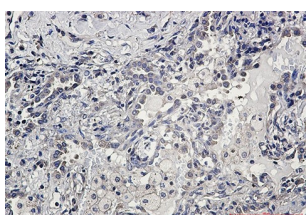
Conjugation

Un-conjugated

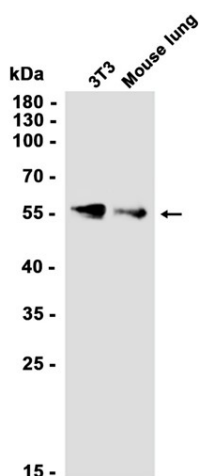
Concentration	1 mg/mL
Formulation	PBS Only
Storage Stability	Store at -20°C. Recommended to aliquot into single-use vials. Supplied in 1X PBS (pH 7.4). BSA and Azide Free. Stable for 12 months from date of receipt.



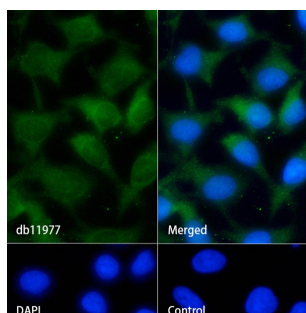
Western blot analysis of extracts from Jurkat, C6, CHO-K1, HeLa cells and Rat brain tissue using [db11977](#) at 1:1000.



Immunohistochemical analysis of paraffin-embedded human lung cancer using [db11977](#) antibody.



Western blot analysis of extracts from 3T3 cells and Mouse lung tissue using [db11977](#) at 1:1000.



Immunofluorescence analysis of HeLa cells labelling AKT1/2/3 with [db11977](#).

The cells were fixed with cold 100% methanol (10min, 4°C) and blocked in 1% BSA/10% normal goat serum/0.3M glycine in 0.1% PBS-Tween 20 for 1h. The cells were then incubate with [db11977](#) (1:100) at room temperature for 1h, followed by a further incubation at room temperature for 45min with Goat Anti Rabbit IgG (H+L)-AF488 [db10005](#), shown in green). Nuclear DNA was labeled in blue with DAPI.

Control: Secondary antibody only.