

Recombinant

DGRmAb®

LC3B (DGR11871) Rabbit mAb (PBS Only)

db15555-PBS

Package : 100µg

Product Name : LC3B (DGR11871) Rabbit mAb (PBS Only)

Cat.No.: db15555-PBS

Synonyms : LC3B; ATG8F; MAP1LC3B-a; MAP1A/1BLC3

Application : WB, IHC, ICC/IF

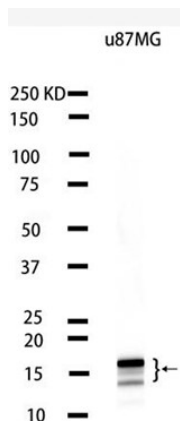
Reactivity : Human, Mouse, Rat, Pig

Host species : Rabbit

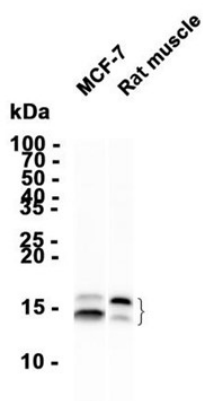
Background	The product of this gene is a subunit of neuronal microtubule-associated MAP1A and MAP1B proteins, which are involved in microtubule assembly and important for neurogenesis. Studies on the rat homolog implicate a role for this gene in autophagy, a process that involves the bulk degradation of cytoplasmic component. [provided by RefSeq, Jul 2008]
Immunogen	A synthetic peptide of human LC3B
Gene ID	81631, 67443, 64862
Swiss Prot	Q9GZQ8, Q9CQV6, Q62625
Synonyms	LC3B; ATG8F; MAP1LC3B-a; MAP1A/1BLC3
Reactivity	Human, Mouse, Rat, Pig
Application	WB, IHC, ICC/IF
Calculated MW	15 kDa
Observed MW	14,16 kDa
Host species	Rabbit
Clonality	Monoclonal
Clonality No.	DGR11871
Isotype	IgG
Purity	Affinity Purification
Conjugation	Un-conjugated
Concentration	1 mg/mL
Formulation	PBS Only

Storage Stability

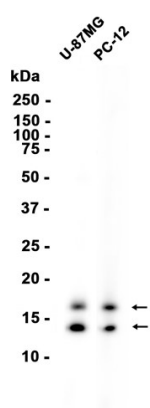
Store at -20°C. Recommended to aliquot into single-use vials. Supplied in 1X PBS (pH 7.4). BSA and Azide Free. Stable for 12 months from date of receipt.



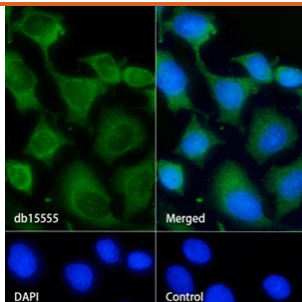
Western blot analysis of extracts from U-87 MG cells using [db15555](#) at 1:1000.



Western blot analysis of extracts from MCF-7 cells and Rat muscle tissue using [db15555](#) at 1:4000.



Western blot analysis of extracts from U-87 MG, PC-12 cells using [db15555](#) at 1:1000.



Immunofluorescence analysis of HeLa cells labelling LC3B with [db15555](#).

The cells were fixed with cold 100% methanol (10min, 4°C) and blocked in 1% BSA/10% normal goat serum/0.3M glycine in 0.1% PBS-Tween 20 for 1h. The cells were then incubate with [db15555](#) (1:500) at room temperature for 1h, followed by a further incubation at room temperature for 45min with Goat Anti Rabbit IgG (H+L)-AF488 [db10005](#), shown in green). Nuclear DNA was labeled in blue with DAPI.

Control: Secondary antibody only.