

Recombinant

DGRmAb®

Bcl-XL (DGR31954) Rabbit mAb (PBS Only)

db14392-PBS

Package : 10µg 100µg

Product Name : Bcl-XL (DGR31954) Rabbit mAb (PBS Only)**Cat.No.:** db14392-PBS**Synonyms** : BCLX; BCL2L; Bcl-X; PPP1R52; BCL-XL/S**Application** : WB, IHC-P, IP**Reactivity** : Human,Mouse,Rat**Host species** : Rabbit**Background**

The protein encoded by this gene belongs to the BCL-2 protein family. BCL-2 family members form hetero- or homodimers and act as anti- or pro-apoptotic regulators that are involved in a wide variety of cellular activities. The proteins encoded by this gene are located at the outer mitochondrial membrane, and have been shown to regulate outer mitochondrial membrane channel (VDAC) opening. VDAC regulates mitochondrial membrane potential, and thus controls the production of reactive oxygen species and release of cytochrome C by mitochondria, both of which are the potent inducers of cell apoptosis. Alternative splicing results in multiple transcript variants encoding two different isoforms. The longer isoform acts as an apoptotic inhibitor and the shorter isoform acts as an apoptotic activator. [provided by RefSeq, Dec 2015]

Immunogen

Recombinant protein of human Bcl-XL

Gene ID

598

Swiss Prot

Q07817

Synonyms

BCLX; BCL2L; Bcl-X; PPP1R52; BCL-XL/S

Reactivity

Human,Mouse,Rat

Application

WB, IHC-P, IP

Calculated MW

26 kDa

Observed MW

30 kDa

Host species

Rabbit

Clonality

Monoclonal

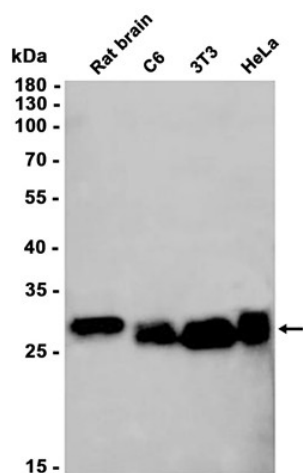
Clonality No.

DGR31954

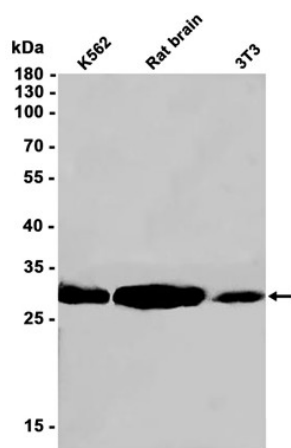
Isotype

IgG

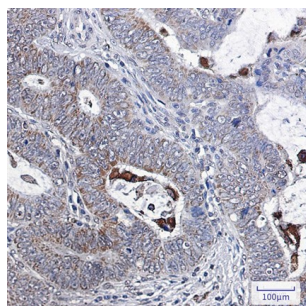
| | |
|--------------------------|---|
| Purity | Affinity Purification |
| Conjugation | Un-conjugated |
| Concentration | 1 mg/mL |
| Formulation | PBS Only |
| Storage Stability | Store at -20°C. Recommended to aliquot into single-use vials. Supplied in 1X PBS (pH 7.4). BSA and Azide Free. Stable for 12 months from date of receipt. |



Western blot analysis of extracts from C6, 3T3, HeLa cells and Rat brain tissue using [db14392](#) at 1:1000.



Western blot analysis of extracts from K562, 3T3 cells and Rat brain tissue using [db14392](#) at 1:1000.



Immunohistochemical analysis of paraffin-embedded human colon cancer using [db14392](#) antibody.