

Recombinant

DGRmAb®

Prostaglandin E Synthase (DGR14315) Rabbit mAb (PBS Only)

db14205-PBS

Package : 100µg

Product Name : Prostaglandin E Synthase (DGR14315) Rabbit mAb (PBS Only)**Cat.No.:** db14205-PBS**Synonyms** : PGES; MPGES; PIG12; PP102; PP1294; MGST-IV; MGST1L1; TP53I12; mPGES-1; MGST1-L1**Application** : WB**Reactivity** : Human,Mouse,Rat**Host species** : Rabbit**Background**

The protein encoded by this gene is a glutathione-dependent prostaglandin E synthase. The expression of this gene has been shown to be induced by proinflammatory cytokine interleukin 1 beta (IL1B). Its expression can also be induced by tumor suppressor protein TP53, and may be involved in TP53 induced apoptosis. Knockout studies in mice suggest that this gene may contribute to the pathogenesis of collagen-induced arthritis and mediate acute pain during inflammatory responses. [provided by RefSeq, Jul 2008]

Immunogen

A synthetic peptide of human Prostaglandin E Synthase

Gene ID

9536

Swiss Prot

O14684

Synonyms

PGES; MPGES; PIG12; PP102; PP1294; MGST-IV; MGST1L1; TP53I12; mPGES-1; MGST1-L1

Reactivity

Human,Mouse,Rat

Application

WB

Recommended dilution

WB: 1:1000

Calculated MW

17 kDa

Observed MW

17 kDa

Host species

Rabbit

Clonality

Monoclonal

Clonality No.

DGR14315

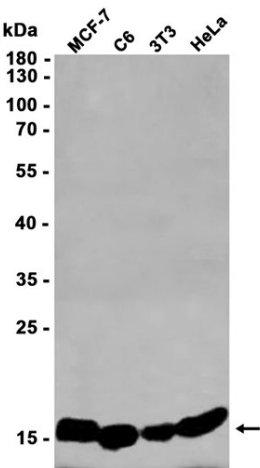
Isotype

IgG

Purity

Affinity Purification

Conjugation	Un-conjugated
Concentration	1 mg/ml
Formulation	PBS Only
Storage Stability	Store at -20°C. Recommended to aliquot into single-use vials. Supplied in 1X PBS (pH 7.4). BSA and Azide Free. Stable for 12 months from date of receipt.



Western blot analysis of extracts from MCF7, C6, 3T3, HeLa cells using [db14205](#) at 1:1000.