

Recombinant

DGRmAb®

SPON2 (DGR19384) Rabbit mAb (PBS Only)

db13002-PBS

Package : 10µg 100µg

Product Name : SPON2 (DGR19384) Rabbit mAb (PBS Only)**Cat.No.:** db13002-PBS**Synonyms** : DIL1; DIL-1; MINDIN; M-SPONDIN**Application** : WB**Reactivity** : Human,Mouse**Host species** : Rabbit

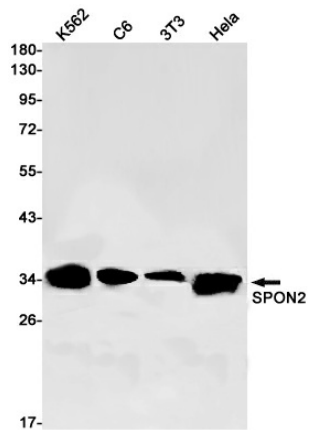
Background	Cell adhesion protein that promotes adhesion and outgrowth of hippocampal embryonic neurons. Binds directly to bacteria and their components and functions as an opsonin for macrophage phagocytosis of bacteria. Essential in the initiation of the innate immune response and represents a unique pattern-recognition molecule in the ECM for microbial pathogens (By similarity). Binds bacterial lipopolysaccharide (LPS).
Immunogen	A synthetic peptide of human SPON2
Gene ID	10417
Swiss Prot	Q9BUD6
Synonyms	DIL1; DIL-1; MINDIN; M-SPONDIN
Reactivity	Human,Mouse
Application	WB
Calculated MW	36 kDa
Observed MW	36 kDa
Host species	Rabbit
Clonality	Monoclonal
Clonality No.	DGR19384
Isotype	IgG
Purity	Affinity Purification
Conjugation	Un-conjugated
Concentration	1 mg/mL

Formulation

PBS Only

Storage Stability

Store at -20°C. Recommended to aliquot into single-use vials. Supplied in 1X PBS (pH 7.4). BSA and Azide Free. Stable for 12 months from date of receipt.



Western blot detection of SPON2 in K562,C6,3T3,HeLa cell lysates using SPON2 antibody(1:1000 diluted).