

Recombinant

DGRmAb®

p21 (DGR14466) Rabbit mAb (PBS Only)

db12889-PBS

Package : 10µg 100µg

Product Name : p21 (DGR14466) Rabbit mAb (PBS Only)**Cat.No.:** db12889-PBS**Synonyms** : P21; CIP1; SDI1; WAF1; CAP20; CDKN1; MDA-6; p21CIP1**Application** : WB**Reactivity** : Human,Mouse,Rat**Host species** : Rabbit**Background**

This gene encodes a potent cyclin-dependent kinase inhibitor. The encoded protein binds to and inhibits the activity of cyclin-cyclin-dependent kinase2 or -cyclin-dependent kinase4 complexes, and thus functions as a regulator of cell cycle progression at G1. The expression of this gene is tightly controlled by the tumor suppressor protein p53, through which this protein mediates the p53-dependent cell cycle G1 phase arrest in response to a variety of stress stimuli. This protein can interact with proliferating cell nuclear antigen, a DNA polymerase accessory factor, and plays a regulatory role in S phase DNA replication and DNA damage repair. This protein was reported to be specifically cleaved by CASP3-like caspases, which thus leads to a dramatic activation of cyclin-dependent kinase2, and may be instrumental in the execution of apoptosis following caspase activation. Mice that lack this gene have the ability to regenerate damaged or missing tissue. Multiple alternatively spliced variants have been found for this gene. [provided by RefSeq, Sep 2015]

Immunogen

A synthetic peptide of human p21

Gene ID

1026

Swiss Prot

P38936

Synonyms

P21; CIP1; SDI1; WAF1; CAP20; CDKN1; MDA-6; p21CIP1

Reactivity

Human,Mouse,Rat

Application

WB

Calculated MW

18 kDa

Observed MW

21 kDa

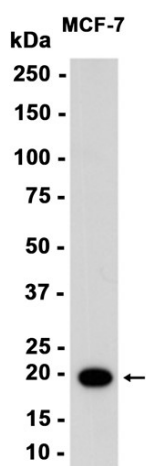
Host species

Rabbit

Clonality

Monoclonal

Clonality No.	DGR14466
Isotype	IgG
Purity	Affinity Purification
Conjugation	Un-conjugated
Concentration	1 mg/mL
Formulation	PBS Only
Storage Stability	Store at -20°C. Recommended to aliquot into single-use vials. Supplied in 1X PBS (pH 7.4). BSA and Azide Free. Stable for 12 months from date of receipt.



Western blot analysis of extracts from MCF-7 cells using [db12889](#) at 1:1000.