

Recombinant

DGRmAb®

IKB alpha (DGR11574) Rabbit mAb (PBS Only)

db11313-PBS

Package : 10µg 100µg

Product Name : IKB alpha (DGR11574) Rabbit mAb (PBS Only)**Cat.No.:** db11313-PBS**Synonyms** : IKBA; MAD-3; NFKBI**Application** : WB, IHC-P, ICC/IF**Reactivity** : Human,Mouse,Rat**Host species** : Rabbit**Background**

This gene encodes a member of the NF-kappa-B inhibitor family, which contain multiple ankrin repeat domains. The encoded protein interacts with REL dimers to inhibit NF-kappa-B/REL complexes which are involved in inflammatory responses. The encoded protein moves between the cytoplasm and the nucleus via a nuclear localization signal and CRM1-mediated nuclear export. Mutations in this gene have been found in ectodermal dysplasia anhidrotic with T-cell immunodeficiency autosomal dominant disease. [provided by RefSeq, Aug 2011]

Immunogen

A synthetic peptide of human IKB alpha

Gene ID

4792

Swiss Prot

P25963

Synonyms

IKBA; MAD-3; NFKBI

Reactivity

Human,Mouse,Rat

Application

WB, IHC-P, ICC/IF

Calculated MW

36 kDa

Observed MW

39 kDa

Host species

Rabbit

Clonality

Monoclonal

Clonality No.

DGR11574

Isotype

IgG

Purity

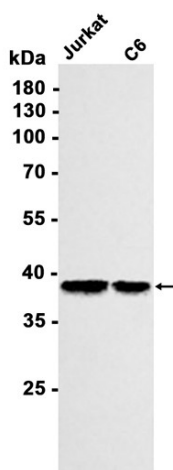
Affinity Purification

Conjugation

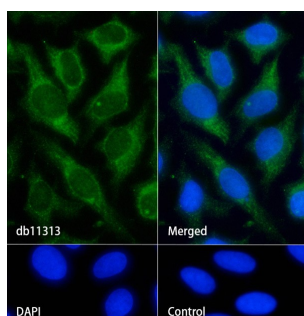
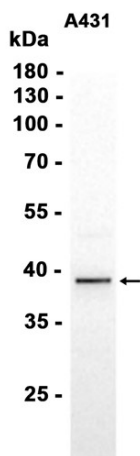
Un-conjugated

Concentration	1 mg/mL
Formulation	PBS Only
Storage Stability	Store at -20°C. Recommended to aliquot into single-use vials. Supplied in 1X PBS (pH 7.4). BSA and Azide Free. Stable for 12 months from date of receipt.

Western blot analysis of extracts from Jurkat, C6 cells using [db11313](#) at 1:1000.



Western blot analysis of extracts from A431 cells using [db11313](#) at 1:2000.



Immunofluorescence analysis of HeLa cells labelling IKB alpha with [db11313](#).

The cells were fixed with cold 100% methanol (10min, 4°C) and blocked in 1% BSA/10% normal goat serum/0.3M glycine in 0.1% PBS-Tween 20 for 1h. The cells were then incubate with [db11313](#) (1:100) at room temperature for 1h, followed by a further incubation at room temperature for 45min with Goat Anti Rabbit IgG (H+L)-AF488 [db10005](#), shown in green). Nuclear DNA was labeled in blue with DAPI.

Control: Secondary antibody only.