

Recombinant

DGRmAb®

Adenosine A1 Receptor (DGR19625) Rabbit mAb (PBS Only)

db11239-PBS

Package : 100µg

Product Name : Adenosine A1 Receptor (DGR19625) Rabbit mAb (PBS Only)**Cat.No.:** db11239-PBS**Synonyms** : RDC7**Application** : WB, IHC-P, ICC/IF, FC, IP**Reactivity** : Human,Mouse,Rat**Host species** : Rabbit**Background**

The protein encoded by this gene is an adenosine receptor that belongs to the G-protein coupled receptor 1 family. There are 3 types of adenosine receptors, each with a specific pattern of ligand binding and tissue distribution, and together they regulate a diverse set of physiologic functions. The type A1 receptors inhibit adenylyl cyclase, and play a role in the fertilization process. Animal studies also suggest a role for A1 receptors in kidney function and ethanol intoxication. Transcript variants with alternative splicing in the 5' UTR have been found for this gene. [provided by RefSeq, Jul 2008]

Immunogen

A synthetic peptide of human Adenosine A1 Receptor

Gene ID

134

Swiss Prot

P30542

Synonyms

RDC7

Reactivity

Human,Mouse,Rat

Application

WB, IHC-P, ICC/IF, FC, IP

Calculated MW

37 kDa

Observed MW

37 kDa

Host species

Rabbit

Clonality

Monoclonal

Clonality No.

DGR19625

Isotype

IgG

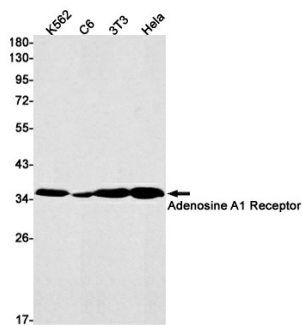
Purity

Affinity Purification

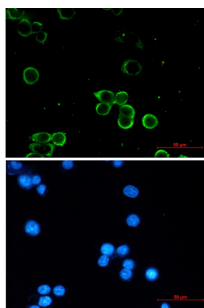
Conjugation

Un-conjugated

Concentration	1 mg/mL
Formulation	PBS Only
Storage Stability	Store at -20°C. Recommended to aliquot into single-use vials. Supplied in 1X PBS (pH 7.4). BSA and Azide Free. Stable for 12 months from date of receipt.



Western blot detection of Adenosine A1 Receptor in K562, C6, 3T3, HeLa cell lysates using Adenosine A1 Receptor antibody (1:1000 diluted).



Immunofluorescent analysis of MCF-7 cells using db11239 antibody (green), and DAPI (blue).