

Recombinant

DGRmAb®

VCAM1 (DGR14388) Rabbit mAb (PBS Only)

db11080-PBS

Package : 10µg 100µg

Product Name : VCAM1 (DGR14388) Rabbit mAb (PBS Only)**Cat.No.:** db11080-PBS**Synonyms** : CD106; INCAM-100**Application** : WB, IHC-P, ICC/IF, FC, IP**Reactivity** : Human,Mouse,Rat**Host species** : Rabbit**Background**

This gene is a member of the Ig superfamily and encodes a cell surface sialoglycoprotein expressed by cytokine-activated endothelium. This type I membrane protein mediates leukocyte-endothelial cell adhesion and signal transduction, and may play a role in the development of atherosclerosis and rheumatoid arthritis. Three alternatively spliced transcripts encoding different isoforms have been described for this gene. [provided by RefSeq, Dec 2010]

Immunogen

A synthetic peptide of mouse VCAM1

Gene ID

7412

Swiss Prot

P19320

Synonyms

CD106; INCAM-100

Reactivity

Human,Mouse,Rat

Application

WB, IHC-P, ICC/IF, FC, IP

Calculated MW

81 kDa

Observed MW

110 kDa

Host species

Rabbit

Clonality

Monoclonal

Clonality No.

DGR14388

Isotype

IgG

Purity

Affinity Purification

Conjugation

Un-conjugated

Concentration

1 mg/mL

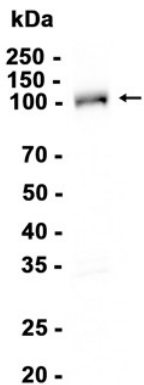
Formulation

PBS Only

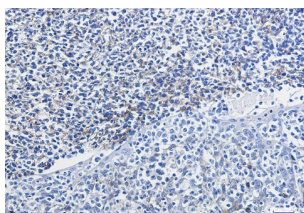
Storage Stability

Store at -20°C. Recommended to aliquot into single-use vials. Supplied in 1X PBS (pH 7.4). BSA and Azide Free. Stable for 12 months from date of receipt.

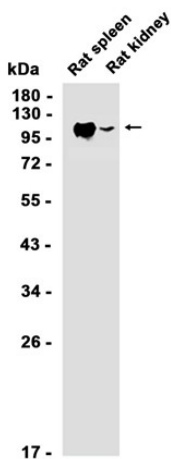
Mouse brain



Western blot analysis of extracts from Mouse brain tissue using [db11080](#) at 1:2000.



Immunohistochemical analysis of paraffin-embedded human tonsil using [db11080](#) antibody.



Western blot analysis of extracts from Rat spleen, Rat kidney tissues using [db11080](#) at 1:2000.