

Recombinant

DGRmAb®

HLA-DR (DGR11990) Rabbit mAb (PBS Only)

db15860-PBS

Package : 10µg 100µg

Product Name : HLA-DR (DGR11990) Rabbit mAb (PBS Only)

Cat.No.: db15860-PBS

Synonyms : HLA-DRA1

Application : WB, IHC-P, ICC/IF, FC

Reactivity : Human

Host species : Rabbit

Background

HLA-DRA is one of the HLA class II alpha chain paralogues. This class II molecule is a heterodimer consisting of an alpha and a beta chain, both anchored in the membrane. It plays a central role in the immune system by presenting peptides derived from extracellular proteins. Class II molecules are expressed in antigen presenting cells (APC: B lymphocytes, dendritic cells, macrophages). The alpha chain is approximately 33-35 kDa and its gene contains 5 exons. Exon 1 encodes the leader peptide, exons 2 and 3 encode the two extracellular domains, and exon 4 encodes the transmembrane domain and the cytoplasmic tail. DRA does not have polymorphisms in the peptide binding part and acts as the sole alpha chain for DRB1, DRB3, DRB4 and DRB5. [provided by RefSeq, Jul 2008]

Immunogen

A synthetic peptide of human HLA-DR

Gene ID

3122

Swiss Prot

P01903

Synonyms

HLA-DRA1

Reactivity

Human

Application

WB, IHC-P, ICC/IF, FC

Calculated MW

29 kDa

Observed MW

30-40 kDa

Host species

Rabbit

Clonality

Monoclonal

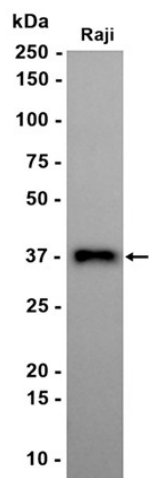
Clonality No.

DGR11990

Isotype

IgG

Purity	Affinity Purification
Conjugation	Un-conjugated
Concentration	1 mg/mL
Formulation	PBS Only
Storage Stability	Store at -20°C. Recommended to aliquot into single-use vials. Supplied in 1X PBS (pH 7.4). BSA and Azide Free. Stable for 12 months from date of receipt.



Western blot analysis of extracts from Raji cells using [db15860](#) at 1:1000.