

Recombinant

DGRmAb®

Phospho-CREB (Ser133) (DGR12894) Rabbit mAb (PBS Only)

db11133-PBS

Package : 100µg

Product Name : Phospho-CREB (Ser133) (DGR12894) Rabbit mAb (PBS Only)**Cat.No.:** db11133-PBS**Synonyms** : CREB; CREB-1**Application** : WB, IHC-P, ICC/IF, FC, IP**Reactivity** : Human,Mouse,Rat**Host species** : Rabbit**Background**

This gene encodes a transcription factor that is a member of the leucine zipper family of DNA binding proteins. This protein binds as a homodimer to the cAMP-responsive element, an octameric palindrome. The protein is phosphorylated by several protein kinases, and induces transcription of genes in response to hormonal stimulation of the cAMP pathway. Alternate splicing of this gene results in several transcript variants encoding different isoforms. [provided by RefSeq, Mar 2016]

Immunogen

A synthetic phosphopeptide corresponding to residues surrounding Ser133 of human CREB

Gene ID

1385

Swiss Prot

P16220

Synonyms

CREB; CREB-1

Reactivity

Human,Mouse,Rat

Application

WB, IHC-P, ICC/IF, FC, IP

Recommended dilution

WB: 1:1000-1:5000

IHC-P: 1:100-1:1000

ICC/IF: 1:100-1:200

FC: 1:50-1:100

IP: 1:20-1:100

Calculated MW

37 kDa

Observed MW

43 kDa

Host species

Rabbit

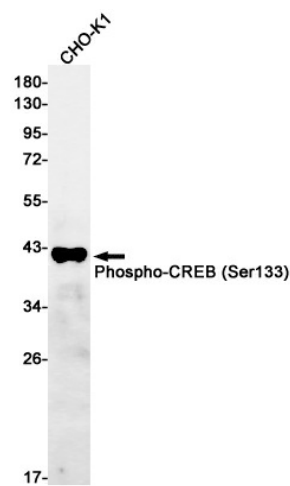
Clonality

Monoclonal

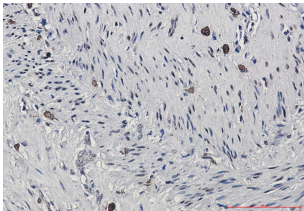
Clonality No.

DGR12894

Isotype	IgG
Purity	Affinity Purification
Conjugation	Un-conjugated
Concentration	1 mg/ml
Formulation	PBS Only
Storage Stability	Store at -20°C. Recommended to aliquot into single-use vials. Supplied in 1X PBS (pH 7.4). BSA and Azide Free. Stable for 12 months from date of receipt.



Western blot detection of Phospho-CREB (Ser133) in CHO-K1 cell lysates using Phospho-CREB (Ser133) antibody(1:500 diluted).



Immunohistochemical analysis of paraffin-embedded human lung cancer using [db11133](#)