

Recombinant

DGRmAb®

Phospho-AP2M1 (Thr156) (DGR13577) Rabbit mAb (PBS Only)

db11379-PBS

Package : 100µg

Product Name : Phospho-AP2M1 (Thr156) (DGR13577) Rabbit mAb (PBS Only)**Cat.No.:** db11379-PBS**Synonyms :** mu2; AP50; CLAPM1**Application :** WB**Reactivity :** Human,Mouse,Rat**Host species :** Rabbit**Background**

This gene encodes a subunit of the heterotetrameric coat assembly protein complex 2 (AP2), which belongs to the adaptor complexes medium subunits family. The encoded protein is required for the activity of a vacuolar ATPase, which is responsible for proton pumping occurring in the acidification of endosomes and lysosomes. The encoded protein may also play an important role in regulating the intracellular trafficking and function of CTLA-4 protein. Three transcript variants encoding different isoforms have been found for this gene. [provided by RefSeq, Jul 2015]

Immunogen

A synthetic phosphopeptide corresponding to residues surrounding Thr156 of human AP2M1

Gene ID

1173

Swiss Prot

Q96CW1

Synonyms

mu2; AP50; CLAPM1

Reactivity

Human,Mouse,Rat

Application

WB

Recommended dilution

WB: 1:1000-1:5000

Calculated MW

50 kDa

Observed MW

50 kDa

Host species

Rabbit

Clonality

Monoclonal

Clonality No.

DGR13577

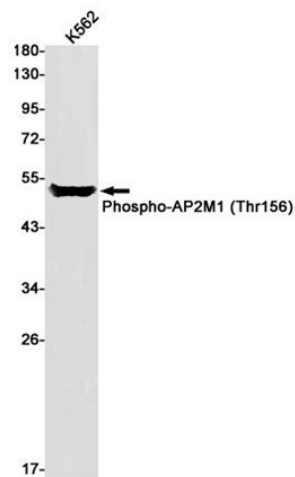
Isotype

IgG

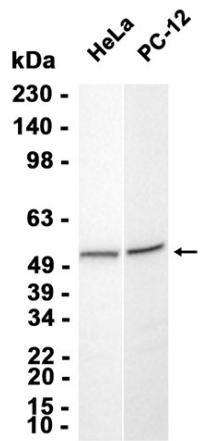
Purity

Affinity Purification

Conjugation	Un-conjugated
Concentration	1 mg/ml
Formulation	PBS Only
Storage Stability	Store at -20°C. Recommended to aliquot into single-use vials. Supplied in 1X PBS (pH 7.4). BSA and Azide Free. Stable for 12 months from date of receipt.



Western blot detection of Phospho-AP2M1 (Thr156) in K562 cell lysates using Phospho-AP2M1 (Thr156) antibody(1:1000 diluted).



Western blot analysis of extracts from HeLa, PC-12 cells using [db11379](#)