

Recombinant

DGRmAb®

Phospho-TGF beta Receptor II (Ser225) (DGR16007) Rabbit mAb (PBS Only)

db13939-PBS

Package : 10µg 100µg

Product Name : Phospho-TGF beta Receptor II (Ser225) (DGR16007) Rabbit mAb (PBS Only)**Cat.No.:** db13939-PBS**Synonyms** : AAT3; FAA3; LDS2; MFS2; RIIC; LDS1B; LDS2B; TAAD2; TGFR-2; TGFbeta-RII**Application** : WB**Reactivity** : Human**Host species** : Rabbit**Background**

The protein encoded by this gene is a transmembrane protein that has a protein kinase domain, forms a heterodimeric complex with TGF-beta receptor type-1, and binds TGF-beta. This receptor/ligand complex phosphorylates proteins, which then enter the nucleus and regulate the transcription of genes related to cell proliferation, cell cycle arrest, wound healing, immunosuppression, and tumorigenesis. Mutations in this gene have been associated with Marfan Syndrome, Loeys-Deitz Aortic Aneurysm Syndrome, and the development of various types of tumors. Alternatively spliced transcript variants encoding different isoforms have been characterized. [provided by RefSeq, Aug 2017]

Immunogen

A synthetic phosphopeptide corresponding to residues surrounding Ser225 of human TGF beta Receptor II

Gene ID

7048

Swiss Prot

P37173

Synonyms

AAT3; FAA3; LDS2; MFS2; RIIC; LDS1B; LDS2B; TAAD2; TGFR-2; TGFbeta-RII

Reactivity

Human

Application

WB

Calculated MW

65 kDa

Observed MW

85 kDa

Host species

Rabbit

Clonality

Monoclonal

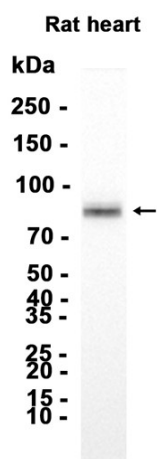
Clonality No.

DGR16007

Isotype

IgG

Purity	Affinity Purification
Conjugation	Un-conjugated
Concentration	1 mg/mL
Formulation	PBS Only
Storage Stability	Store at -20°C. Recommended to aliquot into single-use vials. Supplied in 1X PBS (pH 7.4). BSA and Azide Free. Stable for 12 months from date of receipt.



Western blot analysis of extracts from Rat heart tissue using [db13939](#) at 1:2000.