

Recombinant

DGRmAb®

Phospho-P70 S6 Kinase beta (Ser371) (DGR13529) Rabbit mAb (PBS Only)

db14307-PBS

Package : 10µg 100µg

Product Name : Phospho-P70 S6 Kinase beta (Ser371) (DGR13529) Rabbit mAb (PBS Only)**Cat.No.:** db14307-PBS**Synonyms** : KLS; SRK; S6K2; STK14B; p70S6Kb; P70-beta; S6K-beta2; P70-beta-1; P70-beta-2; p70(S6K)-beta**Application** : WB**Reactivity** : Human,Mouse,Rat**Host species** : Rabbit

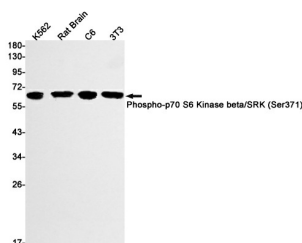
Background	This gene encodes a member of the RSK (ribosomal S6 kinase) family of serine/threonine kinases. This kinase contains a kinase catalytic domain and phosphorylates the S6 ribosomal protein and eukaryotic translation initiation factor 4B (eIF4B). Phosphorylation of S6 leads to an increase in protein synthesis and cell proliferation. [provided by RefSeq, Jan 2015]
Immunogen	A synthetic phosphopeptide corresponding to residues surrounding Ser371 of human P70 S6 Kinase beta
Gene ID	6199
Swiss Prot	Q9UBS0
Synonyms	KLS; SRK; S6K2; STK14B; p70S6Kb; P70-beta; S6K-beta2; P70-beta-1; P70-beta-2; p70(S6K)-beta
Reactivity	Human,Mouse,Rat
Application	WB
Calculated MW	54 kDa
Observed MW	60 kDa
Host species	Rabbit
Clonality	Monoclonal
Clonality No.	DGR13529
Isotype	IgG
Purity	Affinity Purification
Conjugation	Un-conjugated
Concentration	1 mg/mL

Formulation

PBS Only

Storage Stability

Store at -20°C. Recommended to aliquot into single-use vials. Supplied in 1X PBS (pH 7.4). BSA and Azide Free. Stable for 12 months from date of receipt.



Western blot detection of Phospho-p70 S6 Kinase beta/SRK (Ser371) in K562, Rat Brain, C6, 3T3 cell lysates using Phospho-p70 S6 Kinase beta/SRK (Ser371) antibody(1:1000 diluted).