

Recombinant

DGRmAb®

Phospho-MEK4 (Ser80) (DGR33337) Rabbit mAb (PBS Only)

db14900-PBS

Package : 10µg 100µg

Product Name : Phospho-MEK4 (Ser80) (DGR33337) Rabbit mAb (PBS Only)**Cat.No.:** db14900-PBS**Synonyms** : JNKK; MEK4; MKK4; SEK1; SKK1; JNKK1; SERK1; MAPKK4; PRKMK4; SAPKK1; SAPKK-1**Application** : WB, IHC-P**Reactivity** : Human,Mouse**Host species** : Rabbit**Background**

This gene encodes a member of the mitogen-activated protein kinase (MAPK) family. Members of this family act as an integration point for multiple biochemical signals and are involved in a wide variety of cellular processes such as proliferation, differentiation, transcription regulation, and development. They form a three-tiered signaling module composed of MAPKKKs, MAPKKs, and MAPKs. This protein is phosphorylated at serine and threonine residues by MAPKKKs and subsequently phosphorylates downstream MAPK targets at threonine and tyrosine residues. A similar protein in mouse has been reported to play a role in liver organogenesis. A pseudogene of this gene is located on the long arm of chromosome X. Alternative splicing results in multiple transcript variants. [provided by RefSeq, Jul 2013]

Immunogen

A synthetic phosphopeptide corresponding to residues surrounding Ser80 of human MEK4/MKK4

Gene ID

6416

Swiss Prot

P45985

Synonyms

JNKK; MEK4; MKK4; SEK1; SKK1; JNKK1; SERK1; MAPKK4; PRKMK4; SAPKK1; SAPKK-1

Reactivity

Human,Mouse

Application

WB, IHC-P

Calculated MW

44 kDa

Observed MW

44 kDa

Host species

Rabbit

Clonality

Monoclonal

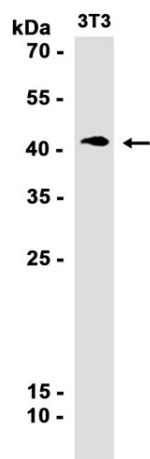
Clonality No.

DGR33337

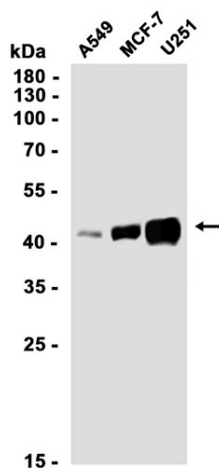
Isotype

IgG

Purity	Affinity Purification
Conjugation	Un-conjugated
Concentration	1 mg/mL
Formulation	PBS Only
Storage Stability	Store at -20°C. Recommended to aliquot into single-use vials. Supplied in 1X PBS (pH 7.4). BSA and Azide Free. Stable for 12 months from date of receipt.



Western blot analysis of extracts from 3T3 cells using [db14900](#) at 1:1000.



Western blot analysis of extracts from A549, MCF-7, U251 cells using [db14900](#) at 1:1000.