

Recombinant

DGRmAb®

alpha 1 Spectrin (DGR11801) Rabbit mAb (PBS Only)

db15906-PBS

Package : 100µg

Product Name : alpha 1 Spectrin (DGR11801) Rabbit mAb (PBS Only)**Cat.No.:** db15906-PBS**Synonyms** : EL2; HPP; HS3; SPH3; SPTA**Application** : WB, FC**Reactivity** : Human,Mouse,Rat**Host species** : Rabbit**Background**

This gene encodes a member of a family of molecular scaffold proteins that link the plasma membrane to the actin cytoskeleton and functions in the determination of cell shape, arrangement of transmembrane proteins, and organization of organelles. The encoded protein is primarily composed of 22 spectrin repeats which are involved in dimer formation. It forms a component of the erythrocyte plasma membrane. Mutations in this gene result in a variety of hereditary red blood cell disorders, including elliptocytosis-2, pyropoikilocytosis, and spherocytosis, type 3. [provided by RefSeq, Aug 2017]

Immunogen

A synthetic peptide of human alpha 1 Spectrin

Gene ID

6708

Swiss Prot

P02549

Synonyms

EL2; HPP; HS3; SPH3; SPTA

Reactivity

Human,Mouse,Rat

Application

WB, FC

Recommended dilution

WB: 1:1000-1:5000

FC: 1:100-1:500

Calculated MW

280 kDa

Observed MW

280 kDa

Host species

Rabbit

Clonality

Monoclonal

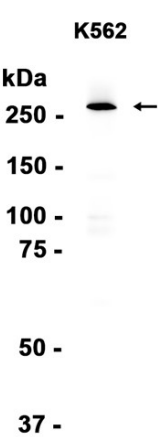
Clonality No.

DGR11801

Isotype

IgG

Purity	Affinity Purification
Conjugation	Un-conjugated
Concentration	1 mg/ml
Formulation	PBS Only
Storage Stability	Store at -20°C. Recommended to aliquot into single-use vials. Supplied in 1X PBS (pH 7.4). BSA and Azide Free. Stable for 12 months from date of receipt.



Western blot analysis of extracts from K562 cells using [db15906](#)