

Recombinant

DGRmAb®

Cyclin B2 (DGR31446) Rabbit mAb (PBS Only)

db11653-PBS

Package : 10µg 100µg

Product Name : Cyclin B2 (DGR31446) Rabbit mAb (PBS Only)**Cat.No.:** db11653-PBS**Synonyms** : HsT17299**Application** : WB, IHC-P, ICC/IF, IP**Reactivity** : Human,Mouse,Rat**Host species** : Rabbit**Background**

Cyclin B2 is a member of the cyclin family, specifically the B-type cyclins. The B-type cyclins, B1 and B2, associate with p34cdc2 and are essential components of the cell cycle regulatory machinery. B1 and B2 differ in their subcellular localization. Cyclin B1 co-localizes with microtubules, whereas cyclin B2 is primarily associated with the Golgi region. Cyclin B2 also binds to transforming growth factor beta RII and thus cyclin B2/cdc2 may play a key role in transforming growth factor beta-mediated cell cycle control. [provided by RefSeq, Jul 2008]

Immunogen

Recombinant protein of human Cyclin B2/CCNB2

Gene ID

9133

Swiss Prot

O95067

Synonyms

HsT17299

Reactivity

Human,Mouse,Rat

Application

WB, IHC-P, ICC/IF, IP

Calculated MW

45 kDa

Observed MW

45 kDa

Host species

Rabbit

Clonality

Monoclonal

Clonality No.

DGR31446

Isotype

IgG

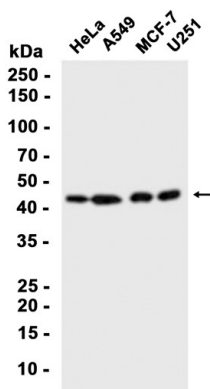
Purity

Affinity Purification

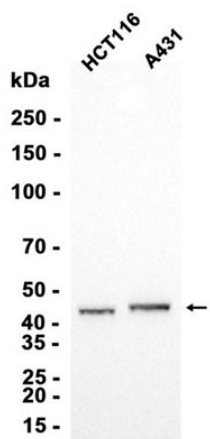
Conjugation

Un-conjugated

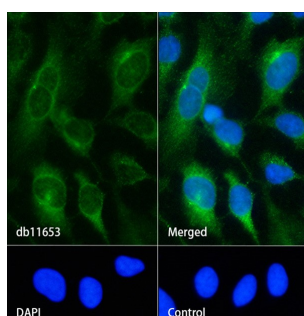
Concentration	1 mg/mL
Formulation	PBS Only
Storage Stability	Store at -20°C. Recommended to aliquot into single-use vials. Supplied in 1X PBS (pH 7.4). BSA and Azide Free. Stable for 12 months from date of receipt.



Western blot analysis of extracts from HeLa, A549, MCF-7, U251 cells using [db11653](#) at 1:1000.



Western blot analysis of extracts from HCT116, A431 cells using [db11653](#) at 1:1000.



Immunofluorescence analysis of HeLa cells labelling Cyclin B2 with [db11653](#).

The cells were fixed with cold 100% methanol (10min, 4°C) and blocked in 1% BSA/10% normal goat serum/0.3M glycine in 0.1% PBS-Tween 20 for 1h. The cells were then incubate with [db11653](#) (1:200) at room temprature for 1h, followed by a further incubation at room temperature for 45min with Goat Anti Rabbit IgG (H+L)-AF488 [db10005](#), shown in green). Nuclear DNA was labeled in blue with DAPI.

Control: Secondary antibody only.