

Recombinant

DGRmAb®

GCET2 (DGR11361) Rabbit mAb (PBS Only)

db14854-PBS

Package : 100µg

Product Name : GCET2 (DGR11361) Rabbit mAb (PBS Only)**Cat.No.:** db14854-PBS**Synonyms :** HGAL; GCAT2; GCET2**Application :** IHC-P, ICC/IF, FC**Reactivity :** Human**Host species :** Rabbit**Background**

This gene encodes a protein which may function in signal transduction pathways and whose expression is elevated in germinal cell lymphomas. It contains a putative PDZ-interacting domain, an immunoreceptor tyrosine-based activation motif (ITAM), and two putative SH2 binding sites. In B cells, its expression is specifically induced by interleukin-4. Alternative splicing results in multiple transcript variants encoding different isoforms. [provided by RefSeq, Jul 2008]

Immunogen

Recombinant protein of human GCET2

Gene ID

257144

Swiss Prot

Q8N6F7

Synonyms

HGAL; GCAT2; GCET2

Reactivity

Human

Application

IHC-P, ICC/IF, FC

Recommended dilution

IHC-P: 1:200-1:2000

ICC/IF: 1:200-1:500

FC: 1:100-1:200

Calculated MW

21 kDa

Host species

Rabbit

Clonality

Monoclonal

Clonality No.

DGR11361

Isotype

IgG

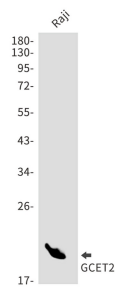
Purity

Affinity Purification

Conjugation

Un-conjugated

Concentration	1 mg/ml
Formulation	PBS Only
Storage Stability	Store at -20°C. Recommended to aliquot into single-use vials. Supplied in 1X PBS (pH 7.4). BSA and Azide Free. Stable for 12 months from date of receipt.



Western blot detection of GCET2 in Raji using GCET2 antibody.