

Recombinant

DGRmAb®

RRM1 (DGR14730) Rabbit mAb (PBS Only)

db11734-PBS

Package : 100µg

Product Name : RRM1 (DGR14730) Rabbit mAb (PBS Only)**Cat.No.:** db11734-PBS**Synonyms** : R1; RR1; RIR1**Application** : WB, IHC-P, ICC/IF, FC**Reactivity** : Human,Mouse,Rat**Host species** : Rabbit**Background**

This gene encodes the large and catalytic subunit of ribonucleotide reductase, an enzyme essential for the conversion of ribonucleotides into deoxyribonucleotides. A pool of available deoxyribonucleotides is important for DNA replication during S phase of the cell cycle as well as multiple DNA repair processes. Alternative splicing results in multiple transcript variants. [provided by RefSeq, Dec 2015]

Immunogen

A synthetic peptide of human RRM1

Gene ID

6240

Swiss Prot

P23921

Synonyms

R1; RR1; RIR1

Reactivity

Human,Mouse,Rat

Application

WB, IHC-P, ICC/IF, FC

Recommended dilution

WB: 1:2000-1:20000

IHC-P: 1:200-1:1000

ICC/IF: 1:100-1:200

FC: 1:100

Calculated MW

90 kDa

Observed MW

90 kDa

Host species

Rabbit

Clonality

Monoclonal

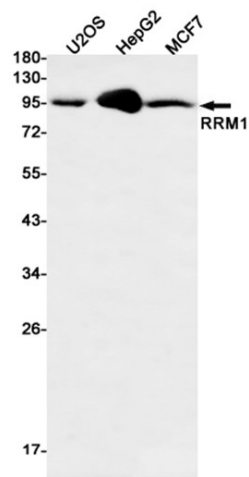
Clonality No.

DGR14730

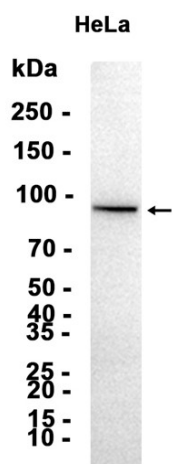
Isotype

IgG

| | |
|-------------------|---|
| Purity | Affinity Purification |
| Conjugation | Un-conjugated |
| Concentration | 1 mg/ml |
| Formulation | PBS Only |
| Storage Stability | Store at -20°C. Recommended to aliquot into single-use vials. Supplied in 1X PBS (pH 7.4). BSA and Azide Free. Stable for 12 months from date of receipt. |



Western blot detection of RRM1 in U2OS,HepG2,MCF7 cell lysates using RRM1 antibody(1:500 diluted).



Western blot analysis of extracts from HeLa cells tissue using [db11734](#)