

Recombinant

DGRmAb®

**p57 Kip2 (DGR34243) Rabbit mAb (PBS Only)**

db14920-PBS

Package : 10µg 100µg

**Product Name** : p57 Kip2 (DGR34243) Rabbit mAb (PBS Only)

**Cat.No.:** db14920-PBS

**Synonyms** : BWS; WBS; p57; BWCR; KIP2; p57Kip2

**Application** : WB, IHC-P, IP

**Reactivity** : Human

**Host species** : Rabbit

**Background**

This gene is imprinted, with preferential expression of the maternal allele. The encoded protein is a tight-binding, strong inhibitor of several G1 cyclin/Cdk complexes and a negative regulator of cell proliferation. Mutations in this gene are implicated in sporadic cancers and Beckwith-Wiedemann syndrome, suggesting that this gene is a tumor suppressor candidate. Three transcript variants encoding two different isoforms have been found for this gene. [provided by RefSeq, Oct 2010]

**Immunogen**

A synthetic peptide of human p57 Kip2

**Gene ID**

1028

**Swiss Prot**

P49918

**Synonyms**

BWS; WBS; p57; BWCR; KIP2; p57Kip2

**Reactivity**

Human

**Application**

WB, IHC-P, IP

**Calculated MW**

32 kDa

**Observed MW**

57 kDa

**Host species**

Rabbit

**Clonality**

Monoclonal

**Clonality No.**

DGR34243

**Isotype**

IgG

**Purity**

Affinity Purification

**Conjugation**

Un-conjugated

**Concentration**

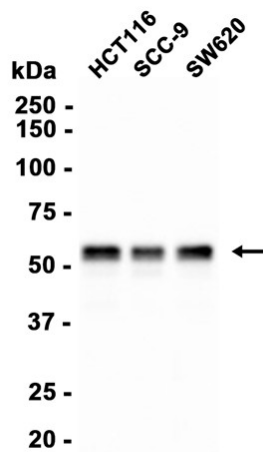
1 mg/mL

**Formulation**

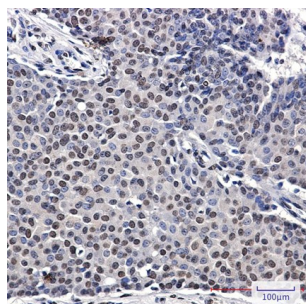
PBS Only

**Storage Stability**

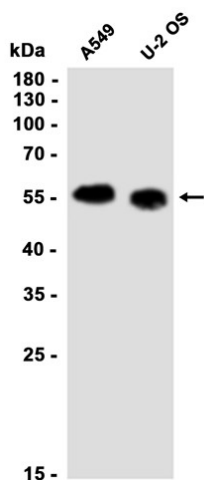
Store at -20°C. Recommended to aliquot into single-use vials. Supplied in 1X PBS (pH 7.4). BSA and Azide Free. Stable for 12 months from date of receipt.



Western blot analysis of extracts from HCT116, SCC-9, SW620 cells using [db14920](#) at 1:1000.



Immunohistochemical analysis of paraffin-embedded human breast cancer using [db14920](#) antibody.



Western blot analysis of extracts from A549, U-2 OS cells using [db14920](#) at 1:1000.