

Recombinant

DGRmAb®

**MCL1 (DGR13908) Rabbit mAb (PBS Only)**

db11616-PBS

Package : 100µg

**Product Name** : MCL1 (DGR13908) Rabbit mAb (PBS Only)**Cat.No.:** db11616-PBS**Synonyms** : TM; EAT; MCL1L; MCL1S; Mcl-1; BCL2L3; MCL1-ES; bcl2-L-3; mcl1/EAT**Application** : WB, IHC-P, ICC/IF, FC**Reactivity** : Human,Mouse,Rat**Host species** : Rabbit**Background**

This gene encodes an anti-apoptotic protein, which is a member of the Bcl-2 family. Alternative splicing results in multiple transcript variants. The longest gene product (isoform 1) enhances cell survival by inhibiting apoptosis while the alternatively spliced shorter gene products (isoform 2 and isoform 3) promote apoptosis and are death-inducing. [provided by RefSeq, Oct 2010]

**Immunogen**

A synthetic peptide of human MCL1

**Gene ID**

4170

**Swiss Prot**

Q07820

**Synonyms**

TM; EAT; MCL1L; MCL1S; Mcl-1; BCL2L3; MCL1-ES; bcl2-L-3; mcl1/EAT

**Reactivity**

Human,Mouse,Rat

**Application**

WB, IHC-P, ICC/IF, FC

**Calculated MW**

37 kDa

**Observed MW**

40 kDa

**Host species**

Rabbit

**Clonality**

Monoclonal

**Clonality No.**

DGR13908

**Isotype**

IgG

**Purity**

Affinity Purification

**Conjugation**

Un-conjugated

**Concentration**

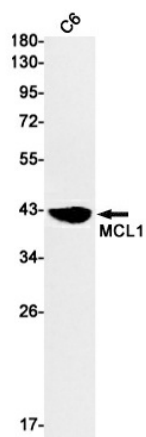
1 mg/mL

**Formulation**

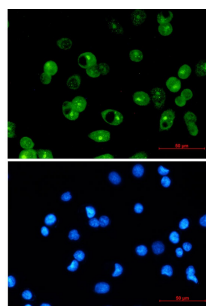
PBS Only

## Storage Stability

Store at -20°C. Recommended to aliquot into single-use vials. Supplied in 1X PBS (pH 7.4). BSA and Azide Free. Stable for 12 months from date of receipt.



Western blot detection of MCL1 in C6 cell lysates using MCL1 antibody(1:1000 diluted).



Immunofluorescent analysis of MCF-7 cells using db11616 antibody (green), and DAPI (blue).