

Recombinant

DGRmAb®

**MLH1 (DGR11983) Rabbit mAb (PBS Only)**

db11226-PBS

Package : 100µg

**Product Name** : MLH1 (DGR11983) Rabbit mAb (PBS Only)**Cat.No.:** db11226-PBS**Synonyms** : FCC2; COCA2; HNPCC; hMLH1; HNPCC2**Application** : WB, IHC, ICC/IF, FC, IP**Reactivity** : Human, Mouse, Rat**Host species** : Rabbit**Background**

The protein encoded by this gene can heterodimerize with mismatch repair endonuclease PMS2 to form MutL alpha, part of the DNA mismatch repair system. When MutL alpha is bound by MutS beta and some accessory proteins, the PMS2 subunit of MutL alpha introduces a single-strand break near DNA mismatches, providing an entry point for exonuclease degradation. The encoded protein is also involved in DNA damage signaling and can heterodimerize with DNA mismatch repair protein MLH3 to form MutL gamma, which is involved in meiosis. This gene was identified as a locus frequently mutated in hereditary nonpolyposis colon cancer (HNPCC). [provided by RefSeq, Aug 2017]

**Immunogen**

A synthetic peptide of human MLH1

**Gene ID**

4292

**Swiss Prot**

P40692

**Synonyms**

FCC2; COCA2; HNPCC; hMLH1; HNPCC2

**Reactivity**

Human, Mouse, Rat

**Application**

WB, IHC, ICC/IF, FC, IP

**Recommended dilution**

WB: 1:2000

IHC: 1:50

ICC/IF: 1:50

FC: 1:20

IP: 1:20

**Calculated MW**

85 kDa

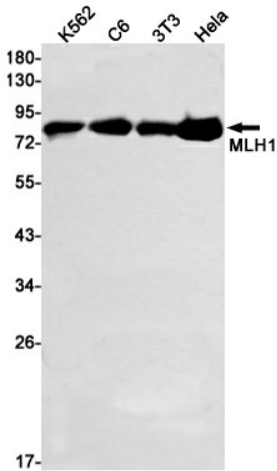
**Observed MW**

85 kDa

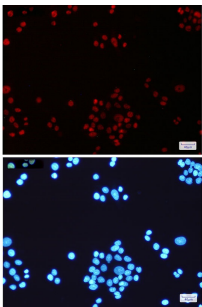
**Host species**

Rabbit

Clonality	Monoclonal
Clonality No.	DGR11983
Isotype	IgG
Purity	Affinity Purification
Conjugation	Un-conjugated
Concentration	1 mg/ml
Formulation	PBS Only
Storage Stability	Store at -20°C. Recommended to aliquot into single-use vials. Supplied in 1X PBS (pH 7.4). BSA and Azide Free. Stable for 12 months from date of receipt.



Western blot detection of MLH1 in K562,C6,3T3,HeLa cell lysates using MLH1 antibody(1:1000 diluted).



Immunofluorescent analysis of HeLa cells using [db11226](#)