

Recombinant

DGRmAb®

**Apolipoprotein H (DGR13515) Rabbit mAb (PBS Only)**

db15550-PBS

Package : 100µg

**Product Name** : Apolipoprotein H (DGR13515) Rabbit mAb (PBS Only)**Cat.No.:** db15550-PBS**Synonyms** : BG; B2G1; B2GP1; APOH; Beta-2-glycoprotein 1**Application** : WB, ICC/IF**Reactivity** : Human,Rat**Host species** : Rabbit**Background**

Apolipoprotein H has been implicated in a variety of physiologic pathways including lipoprotein metabolism, coagulation, and the production of antiphospholipid autoantibodies. APOH may be a required cofactor for anionic phospholipid binding by the antiphospholipid autoantibodies found in sera of many patients with lupus and primary antiphospholipid syndrome, but it does not seem to be required for the reactivity of antiphospholipid autoantibodies associated with infections. [provided by RefSeq, Jul 2008]

**Immunogen**

A synthetic peptide of human Apolipoprotein H

**Gene ID**

350

**Swiss Prot**

P02749

**Synonyms**

BG; B2G1; B2GP1; APOH; Beta-2-glycoprotein 1

**Reactivity**

Human,Rat

**Application**

WB, ICC/IF

**Calculated MW**

38 kDa

**Host species**

Rabbit

**Clonality**

Monoclonal

**Clonality No.**

DGR13515

**Isotype**

IgG

**Purity**

Affinity Purification

**Conjugation**

Un-conjugated

**Concentration**

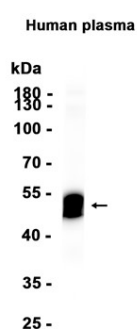
1 mg/mL

**Formulation**

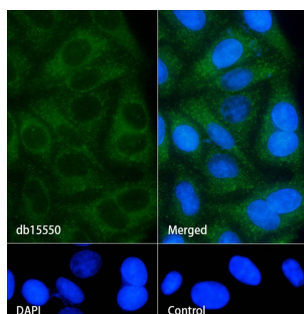
PBS Only

**Storage Stability**

Store at -20°C. Recommended to aliquot into single-use vials. Supplied in 1X PBS (pH 7.4). BSA and Azide Free. Stable for 12 months from date of receipt.



Western blot analysis of extracts from Human plasma tissue using [db15550](#) at 1:1000.



Immunofluorescence analysis of HepG2 cells labelling Apolipoprotein H with [db15550](#).

The cells were fixed with cold 100% methanol (10min, 4°C) and blocked in 1% BSA/10% normal goat serum/0.3M glycine in 0.1% PBS-Tween 20 for 1h. The cells were then incubate with [db15550](#) (1:100) at room temprature for 1h, followed by a further incubation at room temperature for 45min with Goat Anti Rabbit IgG (H+L)-AF488 [db10005](#), shown in green). Nuclear DNA was labeled in blue with DAPI.

Control: Secondary antibody only.