

Recombinant

DGRmAb®

beta Tubulin (DGR11132) Rabbit mAb (PBS Only)

db11073-PBS

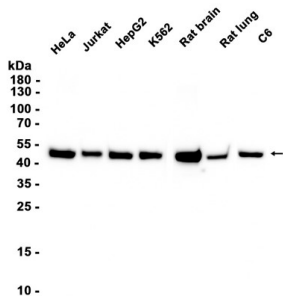
Package : 100µg

Product Name : beta Tubulin (DGR11132) Rabbit mAb (PBS Only)**Cat.No.:** db11073-PBS**Synonyms** : CDCBM7; PMGYSA; bA506K6.1**Application** : WB, IHC-P, ICC/IF, FC**Reactivity** : Human,Mouse,Rat**Host species** : Rabbit

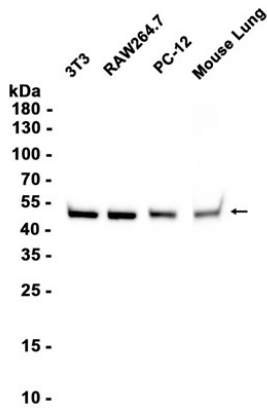
Background	The protein encoded by this gene is a beta isoform of tubulin, which binds GTP and is a major component of microtubules. This gene is highly similar to TUBB2A and TUBB2C. Defects in this gene are a cause of asymmetric polymicrogyria. [provided by RefSeq, Mar 2010]
Immunogen	A synthetic peptide of human beta Tubulin
Gene ID	347733
Swiss Prot	Q9BVA1
Synonyms	CDCBM7; PMGYSA; bA506K6.1
Reactivity	Human,Mouse,Rat
Application	WB, IHC-P, ICC/IF, FC
Calculated MW	50 kDa
Observed MW	50 kDa
Host species	Rabbit
Clonality	Monoclonal
Clonality No.	DGR11132
Isotype	IgG
Purity	Affinity Purification
Conjugation	Un-conjugated
Concentration	1 mg/mL
Formulation	PBS Only

Storage Stability

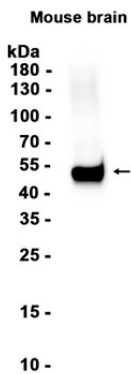
Store at -20°C. Recommended to aliquot into single-use vials. Supplied in 1X PBS (pH 7.4). BSA and Azide Free. Stable for 12 months from date of receipt.



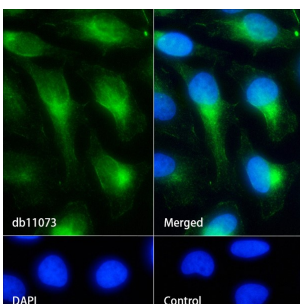
Western blot analysis of extracts from HeLa, Jurkat, HepG2, K562, C6 cells and Rat brain, Rat lung tissues using [db11073](#) at 1:5000.



Western blot analysis of extracts from 3T3, RAW264.7, PC-12 and Mouse lung tissue using [db11073](#) at 1:5000.



Western blot analysis of extracts from Mouse brain tissue using [db11073](#) at 1:5000.



Immunofluorescence analysis of HeLa cells labelling beta Tubulin with [db11073](#).

The cells were fixed with 4% PFA (10min, RT) followed by treatment with 0.1% Triton X-100 (10min, RT), and blocked in 1% BSA/10% normal goat serum/0.3M glycine in 0.1% PBS-Tween 20 for 1h. The cells were then incubate with [db11073](#) (1:500) at room temperature for 1h, followed by a further incubation at room temperature for 45min with Goat Anti Rabbit IgG (H+L)-AF488 [db10005](#), shown in green). Nuclear DNA was labeled in blue with DAPI.

Control: Secondary antibody only.