

Recombinant

DGRmAb®

## IRF2 (DGR15085) Rabbit mAb (PBS Only)

db15148-PBS

Package : 100µg

**Product Name :** IRF2 (DGR15085) Rabbit mAb (PBS Only)**Cat.No.:** db15148-PBS**Synonyms :** IRF-2**Application :** WB, IHC-P, ICC/IF**Reactivity :** Human,Mouse**Host species :** Rabbit**Background**

IRF2 encodes interferon regulatory factor 2, a member of the interferon regulatory transcription factor (IRF) family. IRF2 competitively inhibits the IRF1-mediated transcriptional activation of interferons alpha and beta, and presumably other genes that employ IRF1 for transcription activation. However, IRF2 also functions as a transcriptional activator of histone H4. [provided by RefSeq, Jul 2008]

**Immunogen**

A synthetic peptide of human IRF2

**Gene ID**

3660

**Swiss Prot**

P14316

**Synonyms**

IRF-2

**Reactivity**

Human,Mouse

**Application**

WB, IHC-P, ICC/IF

**Recommended dilution**

WB: 1:1000  
IHC-P: 1:50  
ICC/IF: 1:200-1:500

**Calculated MW**

39 kDa

**Observed MW**

45 kDa

**Host species**

Rabbit

**Clonality**

Monoclonal

**Clonality No.**

DGR15085

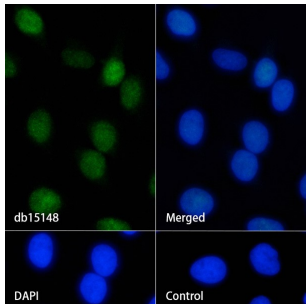
**Isotype**

IgG

**Purity**

Affinity Purification

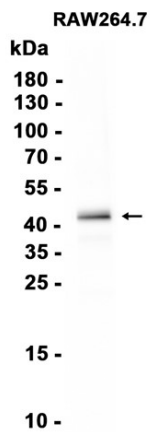
Conjugation	Un-conjugated
Concentration	1 mg/ml
Formulation	PBS Only
Storage Stability	Store at -20°C. Recommended to aliquot into single-use vials. Supplied in 1X PBS (pH 7.4). BSA and Azide Free. Stable for 12 months from date of receipt.



Immunofluorescence analysis of HeLa cells labelling IRF2 with db15148.

The cells were fixed with 4% PFA (10min, RT) followed by treatment with 0.1% Triton X-100 (10min, RT), and blocked in 1% BSA/10% normal goat serum/0.3M glycine in 0.1% PBS-Tween 20 for 1h. The cells were then incubate with db15148 (1:200) at room temprature for 1h, followed by a further incubation at room temperature for 45min with Goat Anti Rabbit IgG (H+L)-AF488 (db10005, shown in green). Nuclear DNA was labeled in blue with DAPI.

Control: Secondary antibody only.



Western blot analysis of extracts from RAW264.7 cells using db15148