

Recombinant

DGRmAb®

BACE2 (DGR33648) Rabbit mAb (PBS Only)

db13079-PBS

Package : 100µg

Product Name : BACE2 (DGR33648) Rabbit mAb (PBS Only)**Cat.No.:** db13079-PBS**Synonyms :** ASP1; BAE2; DRAP; AEPLC; ALP56; ASP21; CDA13; CEAP1**Application :** WB, IHC-P, ICC/IF, IP**Reactivity :** Human,Mouse,Rat**Host species :** Rabbit**Background**

This gene encodes an integral membrane glycoprotein that functions as an aspartic protease. The encoded protein cleaves amyloid precursor protein into amyloid beta peptide, which is a critical step in the etiology of Alzheimer's disease and Down syndrome. The protein precursor is further processed into an active mature peptide. Alternative splicing results in multiple transcript variants. [provided by RefSeq, Jul 2013]

Immunogen

Recombinant protein of human BACE2

Gene ID

25825

Swiss Prot

Q9Y5Z0

Synonyms

ASP1; BAE2; DRAP; AEPLC; ALP56; ASP21; CDA13; CEAP1

Reactivity

Human,Mouse,Rat

Application

WB, IHC-P, ICC/IF, IP

Recommended dilutionWB: 1:1000
IHC-P: 1:100
ICC/IF: 1:50
IP: 1:20-1:50**Calculated MW**

56 kDa

Observed MW

56 kDa

Host species

Rabbit

Clonality

Monoclonal

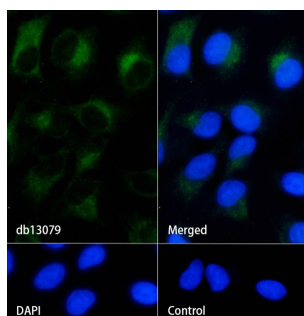
Clonality No.

DGR33648

Isotype

IgG

Purity	Affinity Purification
Conjugation	Un-conjugated
Concentration	1 mg/ml
Formulation	PBS Only
Storage Stability	Store at -20°C. Recommended to aliquot into single-use vials. Supplied in 1X PBS (pH 7.4). BSA and Azide Free. Stable for 12 months from date of receipt.



Immunofluorescence analysis of HeLa cells labelling BACE2 with db13079.

The cells were fixed with cold 100% methanol (10min, 4°C) and blocked in 1% BSA/10% normal goat serum/0.3M glycine in 0.1% PBS-Tween 20 for 1h. The cells were then incubate with db13079 (1:50) at room temprature for 1h, followed by a further incubation at room temperature for 45min with Goat Anti Rabbit IgG (H+L)-AF488 (db10005, shown in green). Nuclear DNA was labeled in blue with DAPI.

Control: Secondary antibody only.