

Recombinant

DGRmAb®

ASK1 (DGR12284) Rabbit mAb (PBS Only)

db11021-PBS

Package : 100µg

Product Name : ASK1 (DGR12284) Rabbit mAb (PBS Only)**Cat.No.:** db11021-PBS**Synonyms :** ASK1; MEKK5; MAPKKK5**Application :** WB, IHC-P, ICC/IF, FC**Reactivity :** Human,Mouse**Host species :** Rabbit**Background**

Mitogen-activated protein kinase (MAPK) signaling cascades include MAPK or extracellular signal-regulated kinase (ERK), MAPK kinase (MKK or MEK), and MAPK kinase kinase (MAPKKK or MEKK). MAPKK kinase/MEKK phosphorylates and activates its downstream protein kinase, MAPK kinase/MEK, which in turn activates MAPK. The kinases of these signaling cascades are highly conserved, and homologs exist in yeast, Drosophila, and mammalian cells. MAPKKK5 contains 1,374 amino acids with all 11 kinase subdomains. Northern blot analysis shows that MAPKKK5 transcript is abundantly expressed in human heart and pancreas. The MAPKKK5 protein phosphorylates and activates MKK4 (aliases SERK1, MAPKK4) in vitro, and activates c-Jun N-terminal kinase (JNK)/stress-activated protein kinase (SAPK) during transient expression in COS and 293 cells; MAPKKK5 does not activate MAPK/ERK. [provided by RefSeq, Jul 2008]

Immunogen

A synthetic peptide of human ASK1

Gene ID

4217

Swiss Prot

Q99683

Synonyms

ASK1; MEKK5; MAPKKK5

Reactivity

Human,Mouse

Application

WB, IHC-P, ICC/IF, FC

Recommended dilutionWB: 1:1000
IHC-P: 1:50
ICC/IF: 1:100-1:200
FC: 1:100**Calculated MW**

155 kDa

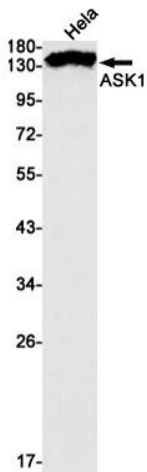
Observed MW

155 kDa

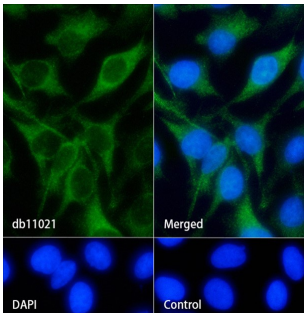
Host species

Rabbit

Clonality	Monoclonal
Clonality No.	DGR12284
Isotype	IgG
Purity	Affinity Purification
Conjugation	Un-conjugated
Concentration	1 mg/ml
Formulation	PBS Only
Storage Stability	Store at -20°C. Recommended to aliquot into single-use vials. Supplied in 1X PBS (pH 7.4). BSA and Azide Free. Stable for 12 months from date of receipt.



Western blot detection of ASK1 in HeLa cell lysates using ASK1 antibody(1:1000 diluted).



Immunofluorescence analysis of HeLa cells labelling ASK1 with db11021.

The cells were fixed with cold 100% methanol (10min, 4°C) and blocked in 1% BSA/10% normal goat serum/0.3M glycine in 0.1% PBS-Tween 20 for 1h. The cells were then incubate with db11021 (1:100) at room temperature for 1h, followed by a further incubation at room temperature for 45min with Goat Anti Rabbit IgG (H+L)-AF488 (db10005, shown in green). Nuclear DNA was labeled in blue with DAPI.

Control: Secondary antibody only.