

Recombinant

DGRmAb®

Apolipoprotein E (DGR14977) Rabbit mAb (PBS Only)

db15177-PBS

Package : 10µg 100µg

Product Name : Apolipoprotein E (DGR14977) Rabbit mAb (PBS Only)**Cat.No.:** db15177-PBS**Synonyms** : AD2; LPG; APO-E; ApoE4; LDLCQ5**Application** : WB, IHC-P, ICC/IF, FC, IP**Reactivity** : Human,Mouse,Rat**Host species** : Rabbit**Background**

The protein encoded by this gene is a major apoprotein of the chylomicron. It binds to a specific liver and peripheral cell receptor, and is essential for the normal catabolism of triglyceride-rich lipoprotein constituents. This gene maps to chromosome 19 in a cluster with the related apolipoprotein C1 and C2 genes. Mutations in this gene result in familial dysbetalipoproteinemia, or type III hyperlipoproteinemia (HLP III), in which increased plasma cholesterol and triglycerides are the consequence of impaired clearance of chylomicron and VLDL remnants. [provided by RefSeq, Jun 2016]

Immunogen

A synthetic peptide of mouse Apolipoprotein E

Gene ID

348

Swiss Prot

P08226

Synonyms

AD2; LPG; APO-E; ApoE4; LDLCQ5

Reactivity

Human,Mouse,Rat

Application

WB, IHC-P, ICC/IF, FC, IP

Calculated MW

36 kDa

Observed MW

36 kDa

Host species

Rabbit

Clonality

Monoclonal

Clonality No.

DGR14977

Isotype

IgG

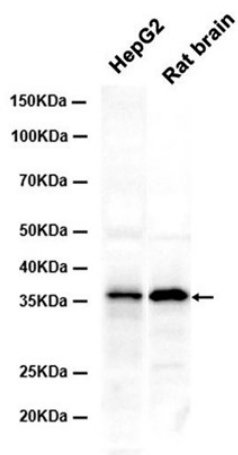
Purity

Affinity Purification

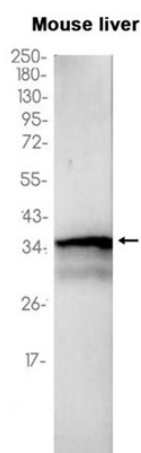
Conjugation

Un-conjugated

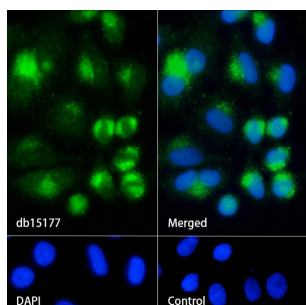
Concentration	1 mg/mL
Formulation	PBS Only
Storage Stability	Store at -20°C. Recommended to aliquot into single-use vials. Supplied in 1X PBS (pH 7.4). BSA and Azide Free. Stable for 12 months from date of receipt.



Western blot analysis of extracts from HepG2 cells and Rat brain tissue using [db15177](#) at 1:1000.



Western blot analysis of extracts from Mouse liver tissue using [db15177](#) at 1:1000.



Immunofluorescence analysis of HepG2 cells labelling Apolipoprotein E with [db15177](#).

The cells were fixed with 4% PFA (10min, RT) followed by treatment with 0.1% Triton X-100 (10min, RT), and blocked in 1% BSA/10% normal goat serum/0.3M glycine in 0.1% PBS-Tween 20 for 1h. The cells were then incubate with [db15177](#) (1:200) at room temperature for 1h, followed by a further incubation at room temperature for 45min with Goat Anti Rabbit IgG (H+L)-AF488 [db10005](#), shown in green). Nuclear DNA was labeled in blue with DAPI.

Control: Secondary antibody only.