

Recombinant

DGRmAb®

**alpha 1a Adrenergic Receptor (DGR12139) Rabbit mAb (PBS Only)**

db12890-PBS

Package : 10µg 100µg

**Product Name** : alpha 1a Adrenergic Receptor (DGR12139) Rabbit mAb (PBS Only)**Cat.No.:** db12890-PBS**Synonyms** : ADRA1C; ADRA1L1; ALPHA1AAR**Application** : WB, ICC/IF, FC**Reactivity** : Human,Mouse,Rat**Host species** : Rabbit**Background**

Alpha-1-adrenergic receptors (alpha-1-ARs) are members of the G protein-coupled receptor superfamily. They activate mitogenic responses and regulate growth and proliferation of many cells. There are 3 alpha-1-AR subtypes: alpha-1A, -1B and -1D, all of which signal through the Gq/11 family of G-proteins and different subtypes show different patterns of activation. This gene encodes alpha-1A-adrenergic receptor. Alternative splicing of this gene generates four transcript variants, which encode four different isoforms with distinct C-termini but having similar ligand binding properties. [provided by RefSeq, Jul 2008]

**Immunogen**

A synthetic peptide of human alpha 1a Adrenergic Receptor

**Gene ID**

148

**Swiss Prot**

P35348

**Synonyms**

ADRA1C; ADRA1L1; ALPHA1AAR

**Reactivity**

Human,Mouse,Rat

**Application**

WB, ICC/IF, FC

**Calculated MW**

52 kDa

**Observed MW**

52 kDa

**Host species**

Rabbit

**Clonality**

Monoclonal

**Clonality No.**

DGR12139

**Isotype**

IgG

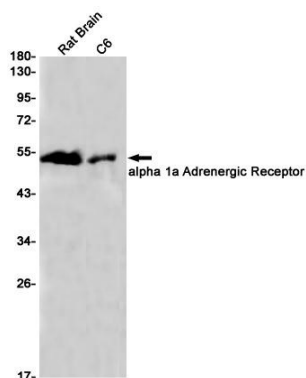
**Purity**

Affinity Purification

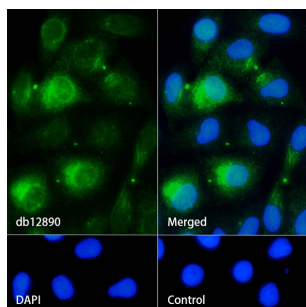
**Conjugation**

Un-conjugated

<b>Concentration</b>	1 mg/mL
<b>Formulation</b>	PBS Only
<b>Storage Stability</b>	Store at -20°C. Recommended to aliquot into single-use vials. Supplied in 1X PBS (pH 7.4). BSA and Azide Free. Stable for 12 months from date of receipt.



Western blot detection of alpha 1a Adrenergic Receptor in Rat Brain, C6 cell lysates using alpha 1a Adrenergic Receptor antibody (1:1000 diluted).



Immunofluorescence analysis of HepG2 cells labelling alpha 1a Adrenergic Receptor with db12890.

The cells were fixed with 4% PFA (10min, RT) followed by treatment with 0.1% Triton X-100 (10min, RT), and blocked in 1% BSA/10% normal goat serum/0.3M glycine in 0.1% PBS-Tween 20 for 1h. The cells were then incubate with db12890 (1:200) at room temprature for 1h, followed by a further incubation at room temperature for 45min with Goat Anti Rabbit IgG (H+L)-AF488 db10005, shown in green). Nuclear DNA was labeled in blue with DAPI.

Control: Secondary antibody only.