

Recombinant

DGRmAb®

## GRSF1 (DGR31531) Rabbit mAb (PBS Only)

db14889-PBS

Package : 100µg

**Product Name :** GRSF1 (DGR31531) Rabbit mAb (PBS Only)**Cat.No.:** db14889-PBS**Synonyms :** G-rich sequence factor 1**Application :** WB, IHC-P, ICC/IF, FC**Reactivity :** Human**Host species :** Rabbit**Background**

The protein encoded by this gene is a cellular protein that binds RNAs containing the G-rich element. The protein is localized in the cytoplasm, and has been shown to stimulate translation of viral mRNAs in vitro. Multiple transcript variants encoding different isoforms have been found for this gene. [provided by RefSeq, Jul 2008]

**Immunogen**

A synthetic peptide of human GRSF1

**Gene ID**

2926

**Swiss Prot**

Q12849

**Synonyms**

G-rich sequence factor 1

**Reactivity**

Human

**Application**

WB, IHC-P, ICC/IF, FC

**Recommended dilution**

WB: 1:1000-1:5000

IHC-P: 1:100

ICC/IF: 1:100

FC: 1:100-1:200

**Calculated MW**

53 kDa

**Observed MW**

53 kDa

**Host species**

Rabbit

**Clonality**

Monoclonal

**Clonality No.**

DGR31531

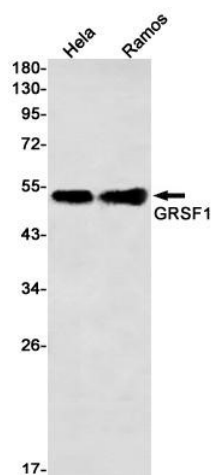
**Isotype**

IgG

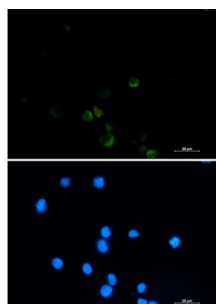
**Purity**

Affinity Purification

Conjugation	Un-conjugated
Concentration	1 mg/ml
Formulation	PBS Only
Storage Stability	Store at -20°C. Recommended to aliquot into single-use vials. Supplied in 1X PBS (pH 7.4). BSA and Azide Free. Stable for 12 months from date of receipt.



Western blot detection of GRSF1 in HeLa, Ramos cell lysates using GRSF1 antibody (1:1000 diluted).



Immunofluorescent analysis of CEM cells using db14889