

Recombinant

DGRmAb®

MyD88 (DGR12195) Rabbit mAb (PBS Only)

db15802-PBS

Package : 10µg 100µg

Product Name : MyD88 (DGR12195) Rabbit mAb (PBS Only)**Cat.No.:** db15802-PBS**Synonyms** : MYD88D**Application** : WB, IHC-P, ICC/IF, FC**Reactivity** : Human**Host species** : Rabbit**Background**

This gene encodes a cytosolic adapter protein that plays a central role in the innate and adaptive immune response. This protein functions as an essential signal transducer in the interleukin-1 and Toll-like receptor signaling pathways. These pathways regulate that activation of numerous proinflammatory genes. The encoded protein consists of an N-terminal death domain and a C-terminal Toll-interleukin1 receptor domain. Patients with defects in this gene have an increased susceptibility to pyogenic bacterial infections. Alternate splicing results in multiple transcript variants. [provided by RefSeq, Feb 2010]

Immunogen

A synthetic peptide of human MyD88

Gene ID

4615

Swiss Prot

Q99836

Synonyms

MYD88D

Reactivity

Human

Application

WB, IHC-P, ICC/IF, FC

Calculated MW

33 kDa

Observed MW

33 kDa

Host species

Rabbit

Clonality

Monoclonal

Clonality No.

DGR12195

Isotype

IgG

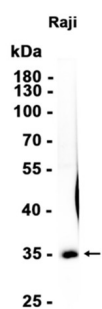
Purity

Affinity Purification

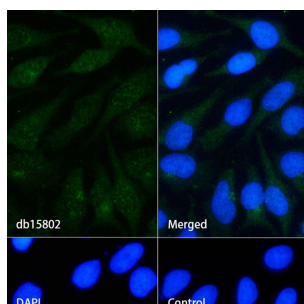
Conjugation

Un-conjugated

Concentration	1 mg/mL
Formulation	PBS Only
Storage Stability	Store at -20°C. Recommended to aliquot into single-use vials. Supplied in 1X PBS (pH 7.4). BSA and Azide Free. Stable for 12 months from date of receipt.



Western blot analysis of extracts from Raji cells using [db15802](#) at 1:1000.



Immunofluorescence analysis of HeLa cells labelling MyD88 with [db15802](#).

The cells were fixed with cold 100% methanol (10min, 4°C) and blocked in 1% BSA/10% normal goat serum/0.3M glycine in 0.1% PBS-Tween 20 for 1h. The cells were then incubate with [db15802](#) (1:200) at room temprature for 1h, followed by a further incubation at room temperature for 45min with Goat Anti Rabbit IgG (H+L)-AF488 [db10005](#), shown in green). Nuclear DNA was labeled in blue with DAPI.

Control: Secondary antibody only.