

Recombinant

DGRmAb®

Calpain 1 (DGR14045) Rabbit mAb (PBS Only)

db15448-PBS

Package : 100µg

Product Name : Calpain 1 (DGR14045) Rabbit mAb (PBS Only)**Cat.No.:** db15448-PBS**Synonyms** : CANP; muCL; CANP1; SPG76; CANPL1; muCANP**Application** : WB, IHC-P, ICC/IF, FC**Reactivity** : Human,Mouse,Rat**Host species** : Rabbit**Background**

The calpains, calcium-activated neutral proteases, are nonlysosomal, intracellular cysteine proteases. The mammalian calpains include ubiquitous, stomach-specific, and muscle-specific proteins. The ubiquitous enzymes consist of heterodimers with distinct large, catalytic subunits associated with a common small, regulatory subunit. This gene encodes the large subunit of the ubiquitous enzyme, calpain 1. Several transcript variants encoding two different isoforms have been found for this gene. [provided by RefSeq, Nov 2010]

Immunogen

A synthetic peptide of human Calpain 1

Gene ID

823

Swiss Prot

P07384

Synonyms

CANP; muCL; CANP1; SPG76; CANPL1; muCANP

Reactivity

Human,Mouse,Rat

Application

WB, IHC-P, ICC/IF, FC

Calculated MW

82 kDa

Observed MW

82 kDa

Host species

Rabbit

Clonality

Monoclonal

Clonality No.

DGR14045

Isotype

IgG

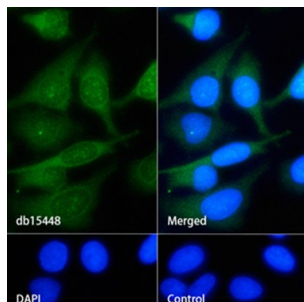
Purity

Affinity Purification

Conjugation

Un-conjugated

Concentration	1 mg/mL
Formulation	PBS Only
Storage Stability	Store at -20°C. Recommended to aliquot into single-use vials. Supplied in 1X PBS (pH 7.4). BSA and Azide Free. Stable for 12 months from date of receipt.



Immunofluorescence analysis of HeLa cells labelling Calpain 1 with [db15448](#).

The cells were fixed with cold 100% methanol (10min, 4°C) and blocked in 1% BSA/10% normal goat serum/0.3M glycine in 0.1% PBS-Tween 20 for 1h. The cells were then incubate with [db15448](#) (1:50) at room temprature for 1h, followed by a further incubation at room temperature for 45min with Goat Anti Rabbit IgG (H+L)-AF488 [db10005](#), shown in green). Nuclear DNA was labeled in blue with DAPI.

Control: Secondary antibody only.