

Recombinant

DGRmAb®

## PKC beta 1 (DGR11157) Rabbit mAb (PBS Only)

db16067-PBS

Package : 100µg

**Product Name** : PKC beta 1 (DGR11157) Rabbit mAb (PBS Only)**Cat.No.:** db16067-PBS**Synonyms** : PKCB; PRKCB1; PRKCB2; PKC-beta**Application** : WB, IHC-P, ICC/IF, FC**Reactivity** : Human,Mouse,Rat**Host species** : Rabbit**Background**

Protein kinase C (PKC) is a family of serine- and threonine-specific protein kinases that can be activated by calcium and second messenger diacylglycerol. PKC family members phosphorylate a wide variety of protein targets and are known to be involved in diverse cellular signaling pathways. PKC family members also serve as major receptors for phorbol esters, a class of tumor promoters. Each member of the PKC family has a specific expression profile and is believed to play a distinct role in cells. The protein encoded by this gene is one of the PKC family members. This protein kinase has been reported to be involved in many different cellular functions, such as B cell activation, apoptosis induction, endothelial cell proliferation, and intestinal sugar absorption. Studies in mice also suggest that this kinase may also regulate neuronal functions and correlate fear-induced conflict behavior after stress. Alternatively spliced transcript variants encoding distinct isoforms have been reported. [provided by RefSeq, Jul 2008]

**Immunogen**

A synthetic peptide of human PKC beta 1

**Gene ID**

5579

**Swiss Prot**

P05771

**Synonyms**

PKCB; PRKCB1; PRKCB2; PKC-beta

**Reactivity**

Human,Mouse,Rat

**Application**

WB, IHC-P, ICC/IF, FC

**Recommended dilution**

WB: 1:1000

IHC-P: 1:100

ICC/IF: 1:100

FC: 1:100-1:200

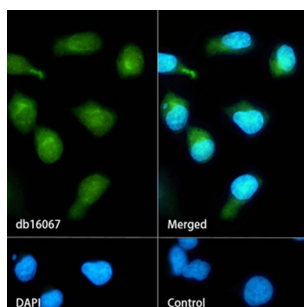
**Calculated MW**

77 kDa

**Observed MW**

77 kDa

Host species	Rabbit
Clonality	Monoclonal
Clonality No.	DGR11157
Isotype	IgG
Purity	Affinity Purification
Conjugation	Un-conjugated
Concentration	1 mg/ml
Formulation	PBS Only
Storage Stability	Store at -20°C. Recommended to aliquot into single-use vials. Supplied in 1X PBS (pH 7.4). BSA and Azide Free. Stable for 12 months from date of receipt.



Immunofluorescence analysis of HeLa cells labelling PKC beta 1 with db16067.

The cells were fixed with cold 100% methanol (10min, 4°C) and blocked in 1% BSA/10% normal goat serum/0.3M glycine in 0.1% PBS-Tween 20 for 1h. The cells were then incubate with db16067 (1:100) at room temprature for 1h, followed by a further incubation at room temperature for 45min with Goat Anti Rabbit IgG (H+L)-AF488 ([db10005](#), shown in green). Nuclear DNA was labeled in blue with DAPI.

Control: Secondary antibody only.