

Recombinant

DGRmAb®

**Integrin beta 1 (DGR11294) Rabbit mAb (PBS Only)**

db16028-PBS

Package : 10µg 100µg

**Product Name** : Integrin beta 1 (DGR11294) Rabbit mAb (PBS Only)**Cat.No.:** db16028-PBS**Synonyms** : CD29; FNRB; MDF2; VLAB; GPIIA; MSK12; VLA-BETA**Application** : WB, IHC-P**Reactivity** : Human**Host species** : Rabbit**Background**

Integrins are heterodimeric proteins made up of alpha and beta subunits. At least 18 alpha and 8 beta subunits have been described in mammals. Integrin family members are membrane receptors involved in cell adhesion and recognition in a variety of processes including embryogenesis, hemostasis, tissue repair, immune response and metastatic diffusion of tumor cells. This gene encodes a beta subunit. Multiple alternatively spliced transcript variants which encode different protein isoforms have been found for this gene. [provided by RefSeq, Jul 2008]

**Immunogen**

A synthetic peptide of human Integrin beta 1

**Gene ID**

3688

**Swiss Prot**

P05556

**Synonyms**

CD29; FNRB; MDF2; VLAB; GPIIA; MSK12; VLA-BETA

**Reactivity**

Human

**Application**

WB, IHC-P

**Calculated MW**

88 kDa

**Observed MW**

120-160 kDa

**Host species**

Rabbit

**Clonality**

Monoclonal

**Clonality No.**

DGR11294

**Isotype**

IgG

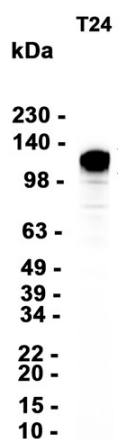
**Purity**

Affinity Purification

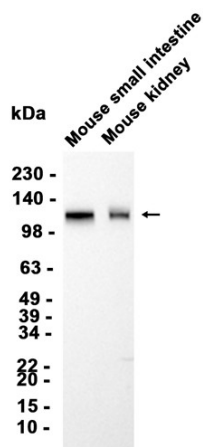
**Conjugation**

Un-conjugated

<b>Concentration</b>	1 mg/mL
<b>Formulation</b>	PBS Only
<b>Storage Stability</b>	Store at -20°C. Recommended to aliquot into single-use vials. Supplied in 1X PBS (pH 7.4). BSA and Azide Free. Stable for 12 months from date of receipt.



Western blot analysis of extracts from T24 cells using [db16028](#) at 1:1000.



Western blot analysis of extracts from Mouse small intestine, Mouse kidney tissue using [db16028](#) at 1:1000.