

Recombinant

DGRmAb®

IGF2BP2 (DGR11373) Rabbit mAb (PBS Only)

db16009-PBS

Package : 10µg 100µg

Product Name : IGF2BP2 (DGR11373) Rabbit mAb (PBS Only)**Cat.No.:** db16009-PBS**Synonyms :** IMP2; IMP-2; VICKZ2**Application :** WB, IHC-P, ICC/IF**Reactivity :** Human,Mouse,Rat**Host species :** Rabbit**Background**

This gene encodes a protein that binds the 5' UTR of insulin-like growth factor 2 (IGF2) mRNA and regulates its translation. It plays an important role in metabolism and variation in this gene is associated with susceptibility to diabetes. Alternative splicing and promoter usage results in multiple transcript variants. Related pseudogenes are found on several chromosomes. [provided by RefSeq, Sep 2016]

Immunogen

A synthetic peptide of human IGF2BP2

Gene ID

10644

Swiss Prot

Q9Y6M1

Synonyms

IMP2; IMP-2; VICKZ2

Reactivity

Human,Mouse,Rat

Application

WB, IHC-P, ICC/IF

Calculated MW

66 kDa

Observed MW

66 kDa

Host species

Rabbit

Clonality

Monoclonal

Clonality No.

DGR11373

Isotype

IgG

Purity

Affinity Purification

Conjugation

Un-conjugated

Concentration

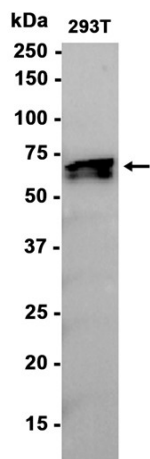
1 mg/mL

Formulation

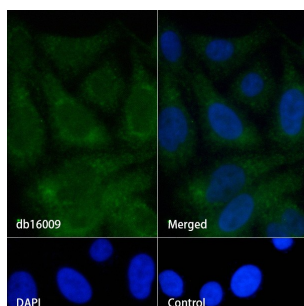
PBS Only

Storage Stability

Store at -20°C. Recommended to aliquot into single-use vials. Supplied in 1X PBS (pH 7.4). BSA and Azide Free. Stable for 12 months from date of receipt.



Western blot analysis of extracts from 293T cells using db16009 at 1:1000.



Immunofluorescence analysis of HepG2 cells labelling IGF2BP2 with db16009.

The cells were fixed with 4% PFA (10min, RT) followed by treatment with 0.1% Triton X-100 (10min, RT), and blocked in 1% BSA/10% normal goat serum/0.3M glycine in 0.1% PBS-Tween 20 for 1h. The cells were then incubate with db16009 (1:100) at room temprature for 1h, followed by a further incubation at room temperature for 45min with Goat Anti Rabbit IgG (H+L)-AF488 (db10005, shown in green). Nuclear DNA was labeled in blue with DAPI.

Control: Secondary antibody only.