

Recombinant

DGRmAb®

CD45 (DGR14623) Rabbit mAb (PBS Only)

db15259-PBS

Package : 100µg

Product Name : CD45 (DGR14623) Rabbit mAb (PBS Only)**Cat.No.:** db15259-PBS**Synonyms** : LCA; LY5; B220; CD45; L-CA; T200; CD45R; GP180**Application** : WB, IHC-P, IP**Reactivity** : Human,Mouse**Host species** : Rabbit**Background**

The protein encoded by this gene is a member of the protein tyrosine phosphatase (PTP) family. PTPs are known to be signaling molecules that regulate a variety of cellular processes including cell growth, differentiation, mitosis, and oncogenic transformation. This PTP contains an extracellular domain, a single transmembrane segment and two tandem intracytoplasmic catalytic domains, and thus is classified as a receptor type PTP. This PTP has been shown to be an essential regulator of T- and B-cell antigen receptor signaling. It functions through either direct interaction with components of the antigen receptor complexes, or by activating various Src family kinases required for the antigen receptor signaling. This PTP also suppresses JAK kinases, and thus functions as a regulator of cytokine receptor signaling. Alternatively spliced transcripts variants of this gene, which encode distinct isoforms, have been reported. [provided by RefSeq, Jun 2012]

Immunogen

A synthetic peptide of mouse CD45

Gene ID

5788

Swiss Prot

P06800

Synonyms

LCA; LY5; B220; CD45; L-CA; T200; CD45R; GP180

Reactivity

Human,Mouse

Application

WB, IHC-P, IP

Recommended dilutionWB: 1:1000
IHC-P: 1:1000-1:5000
IP: 1:20-1:50**Calculated MW**

147 kDa

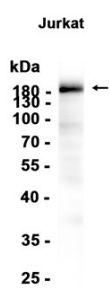
Observed MW

180-240 kDa

Host species

Rabbit

Clonality	Monoclonal
Clonality No.	DGR14623
Isotype	IgG
Purity	Affinity Purification
Conjugation	Un-conjugated
Concentration	1 mg/ml
Formulation	PBS Only
Storage Stability	Store at -20°C. Recommended to aliquot into single-use vials. Supplied in 1X PBS (pH 7.4). BSA and Azide Free. Stable for 12 months from date of receipt.



Western blot analysis of extracts from Jurkat cells using [db15259](#)