

Recombinant

DGRmAb®

**Aquaporin 2 (DGR16662) Rabbit mAb (PBS Only)**

db14899-PBS

Package : 100µg

**Product Name** : Aquaporin 2 (DGR16662) Rabbit mAb (PBS Only)**Cat.No.:** db14899-PBS**Synonyms** : AQP-CD; WCH-CD**Application** : WB, IHC-P, IP**Reactivity** : Human,Mouse,Rat**Host species** : Rabbit**Background**

This gene encodes a water channel protein located in the kidney collecting tubule. It belongs to the MIP/aquaporin family, some members of which are clustered together on chromosome 12q13. Mutations in this gene have been linked to autosomal dominant and recessive forms of nephrogenic diabetes insipidus. [provided by RefSeq, Oct 2008]

**Immunogen**

A synthetic peptide of human Aquaporin 2

**Gene ID**

359

**Swiss Prot**

P41181

**Synonyms**

AQP-CD; WCH-CD

**Reactivity**

Human,Mouse,Rat

**Application**

WB, IHC-P, IP

**Recommended dilution**WB: 1:1000  
IHC-P: 1:500-1:2000  
IP: 1:20-1:50**Calculated MW**

29 kDa

**Observed MW**

37 kDa

**Host species**

Rabbit

**Clonality**

Monoclonal

**Clonality No.**

DGR16662

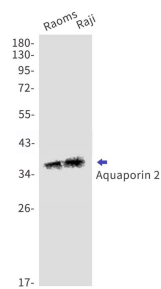
**Isotype**

IgG

**Purity**

Affinity Purification

Conjugation	Un-conjugated
Concentration	1 mg/ml
Formulation	PBS Only
Storage Stability	Store at -20°C. Recommended to aliquot into single-use vials. Supplied in 1X PBS (pH 7.4). BSA and Azide Free. Stable for 12 months from date of receipt.



Western blot detection of Aquaporin 2 in Raoms,Raji cell lysates using Aquaporin 2 antibody(1:1000 diluted).