

Recombinant

DGRmAb®

**KGF (DGR15837) Rabbit mAb (PBS Only)**

db14855-PBS

Package : 100µg

**Product Name** : KGF (DGR15837) Rabbit mAb (PBS Only)**Cat.No.:** db14855-PBS**Synonyms** : KGF; HBGF-7**Application** : WB**Reactivity** : Human,Mouse,Rat**Host species** : Rabbit**Background**

The protein encoded by this gene is a member of the fibroblast growth factor (FGF) family. FGF family members possess broad mitogenic and cell survival activities, and are involved in a variety of biological processes, including embryonic development, cell growth, morphogenesis, tissue repair, tumor growth and invasion. This protein is a potent epithelial cell-specific growth factor, whose mitogenic activity is predominantly exhibited in keratinocytes but not in fibroblasts and endothelial cells. Studies of mouse and rat homologs of this gene implicated roles in morphogenesis of epithelium, reepithelialization of wounds, hair development and early lung organogenesis. [provided by RefSeq, Jul 2008]

**Immunogen**

A synthetic peptide of human KGF

**Gene ID**

2252

**Swiss Prot**

P21781

**Synonyms**

KGF; HBGF-7

**Reactivity**

Human,Mouse,Rat

**Application**

WB

**Recommended dilution**

WB: 1:1000-1:5000

**Calculated MW**

23 kDa

**Observed MW**

28 kDa

**Host species**

Rabbit

**Clonality**

Monoclonal

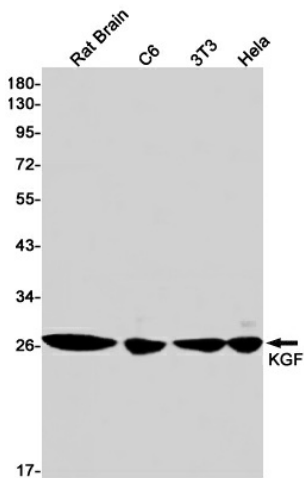
**Clonality No.**

DGR15837

**Isotype**

IgG

Purity	Affinity Purification
Conjugation	Un-conjugated
Concentration	1 mg/ml
Formulation	PBS Only
Storage Stability	Store at -20°C. Recommended to aliquot into single-use vials. Supplied in 1X PBS (pH 7.4). BSA and Azide Free. Stable for 12 months from date of receipt.



Western blot detection of KGF in Rat Brain,C6,3T3,Hela cell lysates using KGF antibody(1:1000 diluted).