

Recombinant

DGRmAb®

GTPase HRAS (DGR18859) Rabbit mAb (PBS Only)

db14627-PBS

Package : 100µg

Product Name : GTPase HRAS (DGR18859) Rabbit mAb (PBS Only)**Cat.No.:** db14627-PBS**Synonyms** : CTLO; HAMSV; HRAS1; RASH1; p21ras; C-H-RAS; H-RASIDX; C-BAS/HAS; C-HA-RAS1**Application** : WB, IP**Reactivity** : Human,Mouse,Rat**Host species** : Rabbit**Background**

This gene belongs to the Ras oncogene family, whose members are related to the transforming genes of mammalian sarcoma retroviruses. The products encoded by these genes function in signal transduction pathways. These proteins can bind GTP and GDP, and they have intrinsic GTPase activity. This protein undergoes a continuous cycle of de- and re-palmitoylation, which regulates its rapid exchange between the plasma membrane and the Golgi apparatus. Mutations in this gene cause Costello syndrome, a disease characterized by increased growth at the prenatal stage, growth deficiency at the postnatal stage, predisposition to tumor formation, cognitive disability, skin and musculoskeletal abnormalities, distinctive facial appearance and cardiovascular abnormalities. Defects in this gene are implicated in a variety of cancers, including bladder cancer, follicular thyroid cancer, and oral squamous cell carcinoma. Multiple transcript variants, which encode different isoforms, have been identified for this gene. [provided by RefSeq, Jul 2008]

Immunogen

A synthetic peptide of human GTPase HRAS

Gene ID

3265

Swiss Prot

P01112

Synonyms

CTLO; HAMSV; HRAS1; RASH1; p21ras; C-H-RAS; H-RASIDX; C-BAS/HAS; C-HA-RAS1

Reactivity

Human,Mouse,Rat

Application

WB, IP

Recommended dilutionWB: 1:1000
IP: 1:50-1:100**Calculated MW**

21 kDa

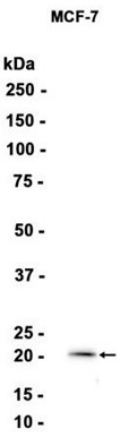
Observed MW

21 kDa

Host species

Rabbit

| | |
|-------------------|---|
| Clonality | Monoclonal |
| Clonality No. | DGR18859 |
| Isotype | IgG |
| Purity | Affinity Purification |
| Conjugation | Un-conjugated |
| Concentration | 1 mg/ml |
| Formulation | PBS Only |
| Storage Stability | Store at -20°C. Recommended to aliquot into single-use vials. Supplied in 1X PBS (pH 7.4). BSA and Azide Free. Stable for 12 months from date of receipt. |



Western blot analysis of extracts from MCF-7 cells using [db14627](#)