

Recombinant

DGRmAb®

alpha Sarcoglycan (DGR18906) Rabbit mAb (PBS Only)

db14470-PBS

Package : 10µg 100µg

Product Name : alpha Sarcoglycan (DGR18906) Rabbit mAb (PBS Only)**Cat.No.:** db14470-PBS**Synonyms** : ADL; DAG2; 50DAG; DMDA2; LGMD2D; SCARMD1; adhalin**Application** : WB, IHC-P, IP**Reactivity** : Human,Mouse,Rat**Host species** : Rabbit**Background**

This gene encodes a component of the dystrophin-glycoprotein complex (DGC), which is critical to the stability of muscle fiber membranes and to the linking of the actin cytoskeleton to the extracellular matrix. Its expression is thought to be restricted to striated muscle. Mutations in this gene result in type 2D autosomal recessive limb-girdle muscular dystrophy. Multiple transcript variants encoding different isoforms have been found for this gene. [provided by RefSeq, Oct 2008]

Immunogen

A synthetic peptide of human alpha Sarcoglycan

Gene ID

6442

Swiss Prot

Q16586

Synonyms

ADL; DAG2; 50DAG; DMDA2; LGMD2D; SCARMD1; adhalin

Reactivity

Human,Mouse,Rat

Application

WB, IHC-P, IP

Calculated MW

43 kDa

Observed MW

50 kDa

Host species

Rabbit

Clonality

Monoclonal

Clonality No.

DGR18906

Isotype

IgG

Purity

Affinity Purification

Conjugation

Un-conjugated

Concentration

1 mg/mL

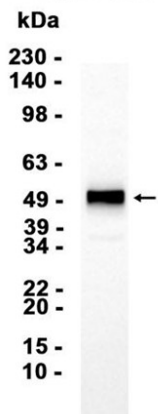
Formulation

PBS Only

Storage Stability

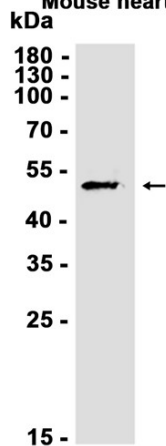
Store at -20°C. Recommended to aliquot into single-use vials. Supplied in 1X PBS (pH 7.4). BSA and Azide Free. Stable for 12 months from date of receipt.

Rat muscle



Western blot analysis of extracts from Rat muscle tissue using [db14470](#) at 1:1000.

Mouse heart



Western blot analysis of extracts from Mouse heart tissue using [db14470](#) at 1:1000.