

Recombinant

DGRmAb®

**GAB1 (DGR20156) Rabbit mAb (PBS Only)**

db14349-PBS

Package : 100µg

**Product Name :** GAB1 (DGR20156) Rabbit mAb (PBS Only)**Cat.No.:** db14349-PBS**Synonyms :** GRB2-associated-binding protein 1; GRB2-associated binder 1; Growth factor receptor bound protein 2-associated protein 1**Application :** WB, IP**Reactivity :** Human**Host species :** Rabbit**Background**

The protein encoded by this gene is a member of the IRS1-like multisubstrate docking protein family. It is an important mediator of branching tubulogenesis and plays a central role in cellular growth response, transformation and apoptosis. Two transcript variants encoding different isoforms have been found for this gene. [provided by RefSeq, Aug 2008]

**Immunogen**

A synthetic peptide of human GAB1

**Gene ID**

2549

**Swiss Prot**

Q13480

**Synonyms**

GRB2-associated-binding protein 1; GRB2-associated binder 1; Growth factor receptor bound protein 2-associated protein 1

**Reactivity**

Human

**Application**

WB, IP

**Recommended dilution**

WB: 1:1000-1:5000

IP: 1:10-1:100

**Calculated MW**

77 kDa

**Observed MW**

110 kDa

**Host species**

Rabbit

**Clonality**

Monoclonal

**Clonality No.**

DGR20156

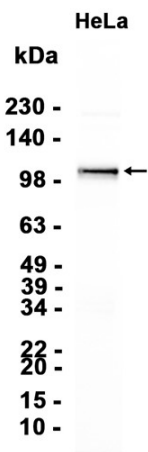
**Isotype**

IgG

**Purity**

Affinity Purification

|                   |   |
|-------------------|---|
| Conjugation       | Un-conjugated   |
| Concentration     | 1 mg/ml   |
| Formulation       | PBS Only  |
| Storage Stability | Store at -20°C. Recommended to aliquot into single-use vials. Supplied in 1X PBS (pH 7.4). BSA and Azide Free. Stable for 12 months from date of receipt. |



Western blot analysis of extracts from HeLa cells using [db14349](#)