

Recombinant

DGRmAb®

ELK1 (DGR19915) Rabbit mAb (PBS Only)

db14344-PBS

Package : 100µg

Product Name : ELK1 (DGR19915) Rabbit mAb (PBS Only)**Cat.No.:** db14344-PBS**Synonyms** : ETS domain-containing protein Elk-1**Application** : WB, ICC/IF**Reactivity** : Human**Host species** : Rabbit**Background**

This gene is a member of the Ets family of transcription factors and of the ternary complex factor (TCF) subfamily. Proteins of the TCF subfamily form a ternary complex by binding to the the serum response factor and the serum response element in the promoter of the c-fos proto-oncogene. The protein encoded by this gene is a nuclear target for the ras-raf-MAPK signaling cascade. This gene produces multiple isoforms by using alternative translational start codons and by alternative splicing. Related pseudogenes have been identified on chromosomes 7 and 14. [provided by RefSeq, Mar 2012]

Immunogen

A synthetic peptide of human ELK1

Gene ID

2002

Swiss Prot

P19419

Synonyms

ETS domain-containing protein Elk-1

Reactivity

Human

Application

WB, ICC/IF

Recommended dilutionWB: 1:1000
ICC/IF: 1:100**Calculated MW**

45 kDa

Observed MW

62 kDa

Host species

Rabbit

Clonality

Monoclonal

Clonality No.

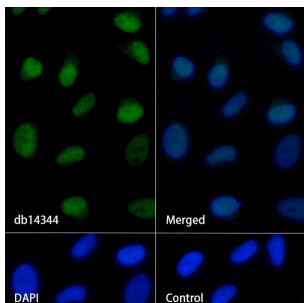
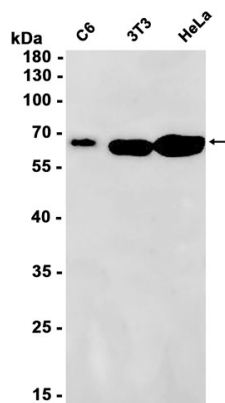
DGR19915

Isotype

IgG

Purity	Affinity Purification
Conjugation	Un-conjugated
Concentration	1 mg/ml
Formulation	PBS Only
Storage Stability	Store at -20°C. Recommended to aliquot into single-use vials. Supplied in 1X PBS (pH 7.4). BSA and Azide Free. Stable for 12 months from date of receipt.

Western blot analysis of extracts from C6, 3T3, HeLa cells using [db14344](#) at 1:1000.



Immunofluorescence analysis of HeLa cells labelling ELK1 with [db14344](#).

The cells were fixed with 4% PFA (10min, RT) followed by treatment with 0.1% Triton X-100 (10min, RT), and blocked in 1% BSA/10% normal goat serum/0.3M glycine in 0.1% PBS-Tween 20 for 1h. The cells were then incubate with [db14344](#) (1:100) at room temprature for 1h, followed by a further incubation at room temperature for 45min with Goat Anti Rabbit IgG (H+L)-AF488 ([db10005](#), shown in green). Nuclear DNA was labeled in blue with DAPI.

Control: Secondary antibody only.