

Recombinant

DGRmAb®

CRTC3 (DGR11919) Rabbit mAb (PBS Only)

db14336-PBS

Package : 100µg

Product Name : CRTC3 (DGR11919) Rabbit mAb (PBS Only)**Cat.No.:** db14336-PBS**Synonyms :** TORC3; TORC-3**Application :** WB, IHC-P, ICC/IF**Reactivity :** Human,Mouse,Rat**Host species :** Rabbit**Background**

This gene is a member of the CREB regulated transcription coactivator gene family. This family regulates CREB-dependent gene transcription in a phosphorylation-independent manner and may be selective for cAMP-responsive genes. The protein encoded by this gene may induce mitochondrial biogenesis and attenuate catecholamine signaling in adipose tissue. A translocation event between this gene and Notch coactivator mastermind-like gene 2, which results in a fusion protein, has been reported in mucoepidermoid carcinomas. Alternative splicing results in multiple transcript variants that encode different protein isoforms. [provided by RefSeq, Jul 2012]

Immunogen

A synthetic peptide of human CRTC3

Gene ID

64784

Swiss Prot

Q6UUV7

Synonyms

TORC3; TORC-3

Reactivity

Human,Mouse,Rat

Application

WB, IHC-P, ICC/IF

Recommended dilution

WB: 1:2000-1:20000

IHC-P: 1:100-1:200

ICC/IF: 1:50-1:100

Calculated MW

67 kDa

Observed MW

78 kDa

Host species

Rabbit

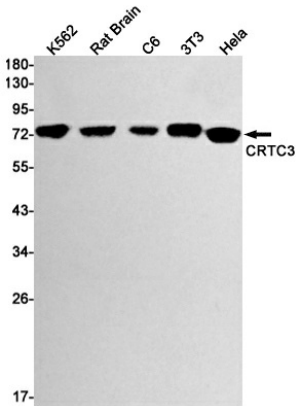
Clonality

Monoclonal

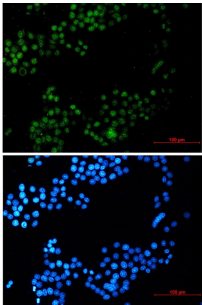
Clonality No.

DGR11919

Isotype	IgG
Purity	Affinity Purification
Conjugation	Un-conjugated
Concentration	1 mg/ml
Formulation	PBS Only
Storage Stability	Store at -20°C. Recommended to aliquot into single-use vials. Supplied in 1X PBS (pH 7.4). BSA and Azide Free. Stable for 12 months from date of receipt.



Western blot detection of CRTC3 in K562,Rat Brain,C6,3T3,Hela cell lysates using CRTC3 antibody(1:1000 diluted).



Immunofluorescent analysis of HeLa cells using [db14336](#)