

Recombinant

DGRmAb®

RAB22A (DGR19427) Rabbit mAb (PBS Only)

db14333-PBS

Package : 100µg

Product Name : RAB22A (DGR19427) Rabbit mAb (PBS Only)**Cat.No.:** db14333-PBS**Synonyms** : RAB22; Rab-22**Application** : WB, ICC/IF, IP**Reactivity** : Human,Mouse,Rat**Host species** : Rabbit**Background**

The protein encoded by this gene is a member of the RAB family of small GTPases. The GTP-bound form of the encoded protein has been shown to interact with early-endosomal antigen 1, and may be involved in the trafficking of and interaction between endosomal compartments. [provided by RefSeq, Jul 2008]

Immunogen

A synthetic peptide of human RAB22A

Gene ID

57403

Swiss Prot

Q9UL26

Synonyms

RAB22; Rab-22

Reactivity

Human,Mouse,Rat

Application

WB, ICC/IF, IP

Recommended dilution

WB: 1:1000-1:5000

ICC/IF: 1:100

IP: 1:10-1:100

Calculated MW

22 kDa

Observed MW

22 kDa

Host species

Rabbit

Clonality

Monoclonal

Clonality No.

DGR19427

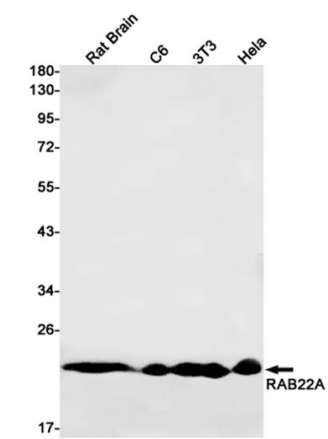
Isotype

IgG

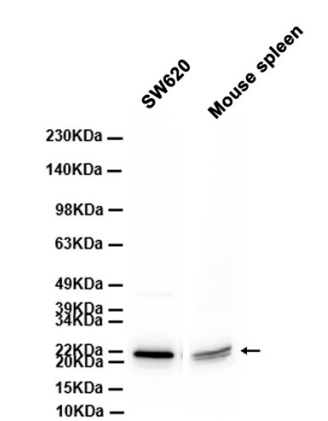
Purity

Affinity Purification

| | |
|-------------------|---|
| Conjugation | Un-conjugated |
| Concentration | 1 mg/ml |
| Formulation | PBS Only |
| Storage Stability | Store at -20°C. Recommended to aliquot into single-use vials. Supplied in 1X PBS (pH 7.4). BSA and Azide Free. Stable for 12 months from date of receipt. |



Western blot detection of RAB22A in Rat Brain,C6,3T3,Hela cell lysates using RAB22A antibody(1:1000 diluted).



Western blot analysis of extracts from SW620 cells and Mouse spleen tissue using [db14333](#)