

Recombinant

DGRmAb®

PTF1A (DGR11823) Rabbit mAb (PBS Only)

db14303-PBS

Package : 100µg

Product Name : PTF1A (DGR11823) Rabbit mAb (PBS Only)**Cat.No.:** db14303-PBS**Synonyms :** PTF1p48; bHLHa29; PTF1-p48**Application :** WB, IP**Reactivity :** Human,Mouse,Rat**Host species :** Rabbit**Background**

Transcription factor implicated in the cell fate determination in various organs. Binds to the E-box consensus sequence 5'-CANNTG-3'. Plays a role in early and late pancreas development and differentiation. Important for determining whether cells allocated to the pancreatic buds continue towards pancreatic organogenesis or revert back to duodenal fates. May be involved in the maintenance of exocrine pancreas-specific gene expression including ELA1 and amylase. Required for the formation of pancreatic acinar and ductal cells. Plays an important role in cerebellar development. Directly regulated by FOXN4 and RORC during retinal development, FOXN4-PTF1A pathway plays a central role in directing the differentiation of retinal progenitors towards horizontal and amacrine fates.

Immunogen

Recombinant protein of mouse PTF1A

Gene ID

19213

Swiss Prot

Q9QX98

Synonyms

PTF1p48; bHLHa29; PTF1-p48

Reactivity

Human,Mouse,Rat

Application

WB, IP

Recommended dilution

WB: 1:1000

IP: 1:50

Calculated MW

35 kDa

Observed MW

48 kDa

Host species

Rabbit

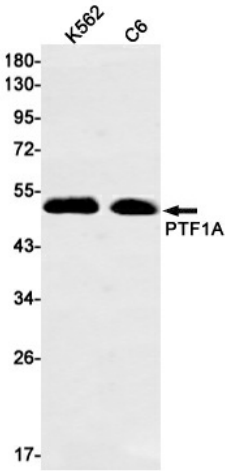
Clonality

Monoclonal

Clonality No.

DGR11823

Isotype	IgG
Purity	Affinity Purification
Conjugation	Un-conjugated
Concentration	1 mg/ml
Formulation	PBS Only
Storage Stability	Store at -20°C. Recommended to aliquot into single-use vials. Supplied in 1X PBS (pH 7.4). BSA and Azide Free. Stable for 12 months from date of receipt.



Western blot detection of PTF1A in K562,C6 cell lysates using PTF1A antibody(1:1000 diluted).